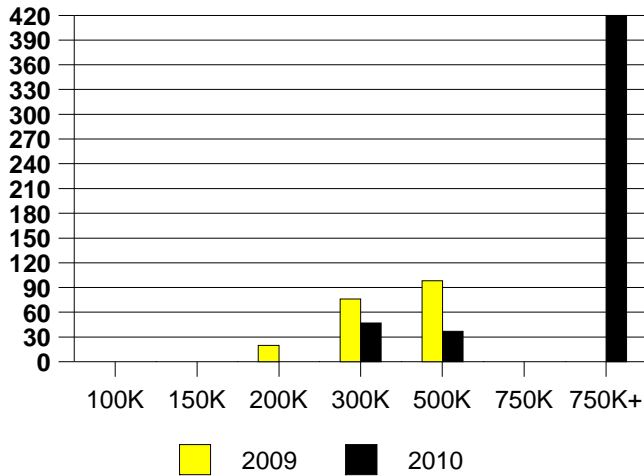
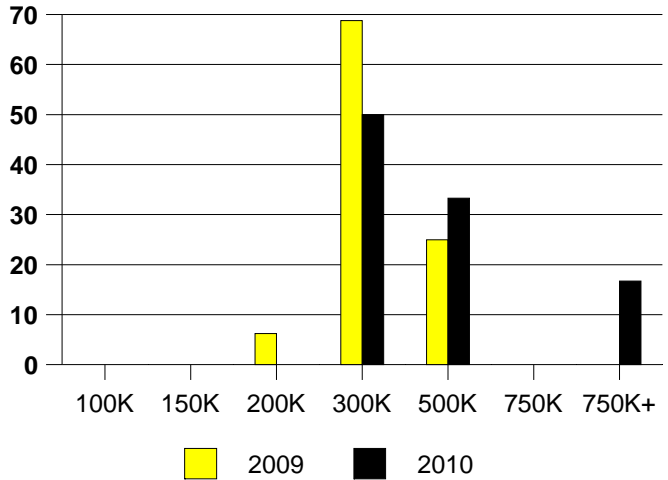


	<u>2009</u>	<u>2010</u>
Total Sold Volume	\$ 4,467,090	\$ 4,667,595
Number of Sales	16	12
Median Sale Price	\$ 261,250	\$ 315,050

**DAYS ON THE MARKET (ADDISON)**



**ADDISON MKT SHARE BY PRICE RANGE**



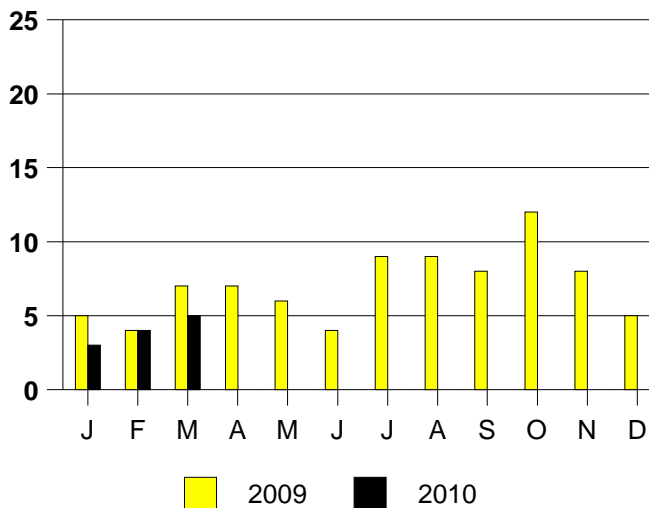
**SALE/LIST PRICE RATIO**

0K-100K	NONE
101K-150K	NONE
151K-200K	NONE
201K-300K	98.2%
301K-500K	97.7%
501K-750K	NONE
751K+	87.3%

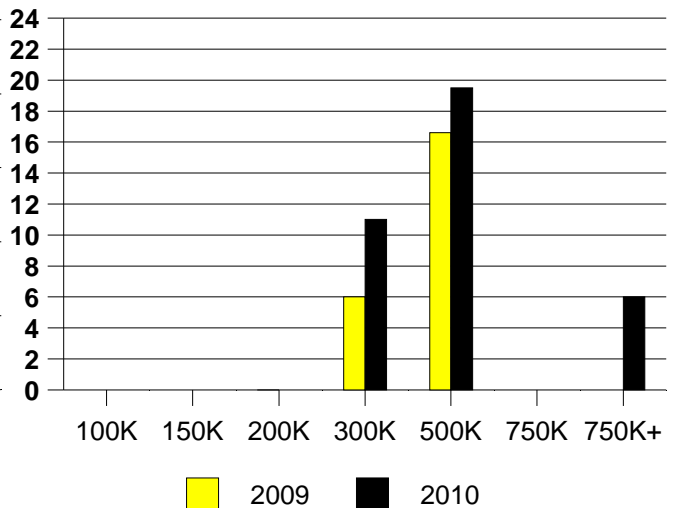
**AVERAGE OVERPRICING**  
Original List Price to Sale Price

2009	6.4%
2010	9.3%

**ADDISON MONTHLY SALES**

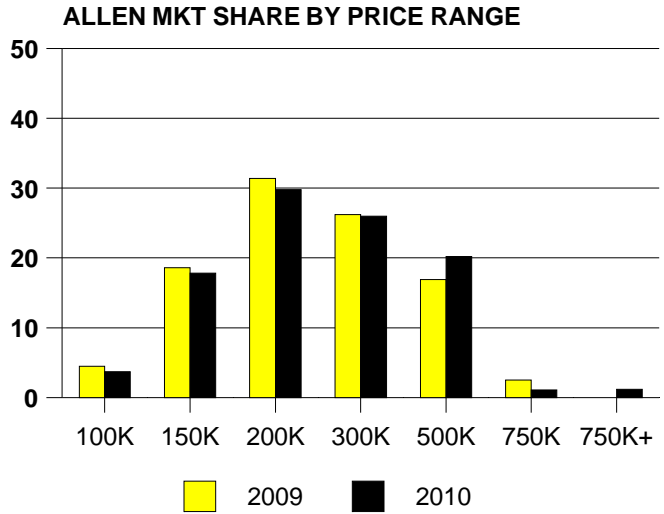
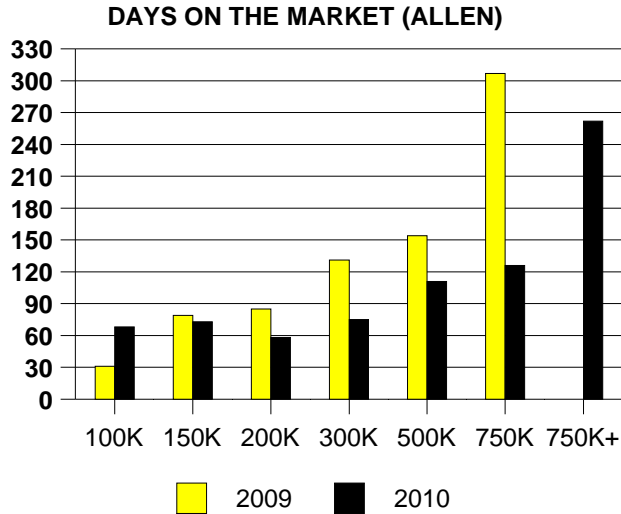


Inventory not shown where no sales  
**ADDISON MONTHS OF INVENTORY**



NTREIS Sold informaton as of 04/02/2010

	2009	2010
Total Sold Volume	\$ 55,389,320	\$ 59,225,388
Number of Sales	242	242
Median Sale Price	\$ 189,500	\$ 199,500

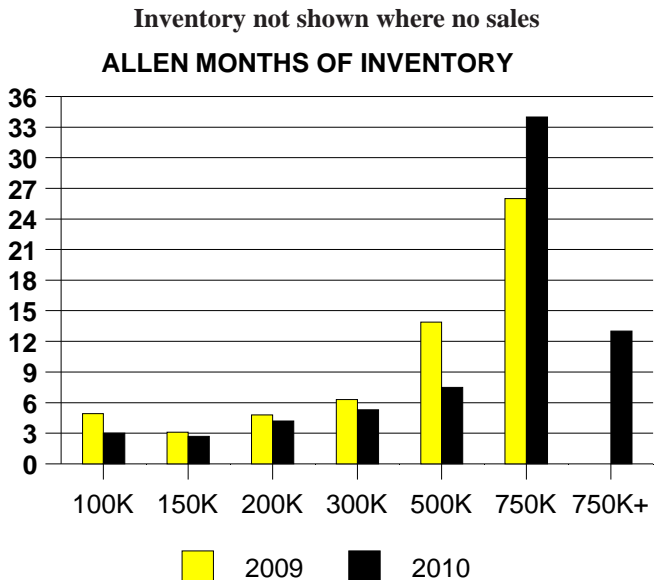
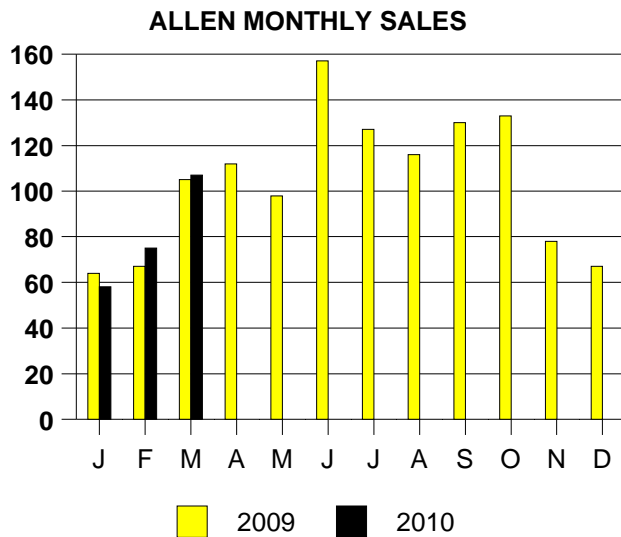


**SALE/LIST PRICE RATIO**

0K-100K	96.6%
101K-150K	97.6%
151K-200K	97.8%
201K-300K	96.7%
301K-500K	94.6%
501K-750K	92.7%
751K+	98.1%

**AVERAGE OVERPRICING**  
Original List Price to Sale Price

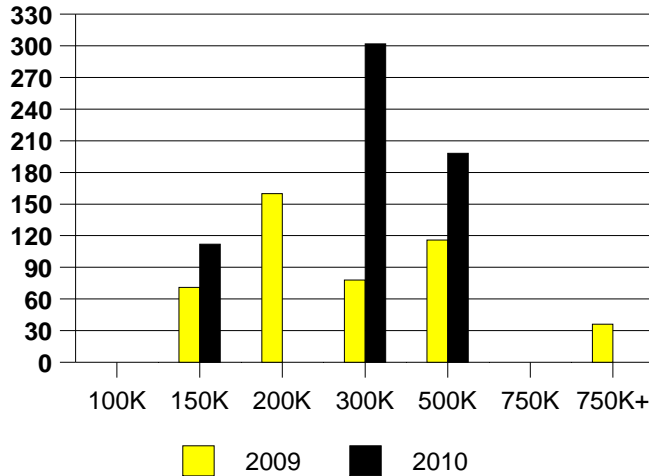
2009	7.9%
2010	5.9%



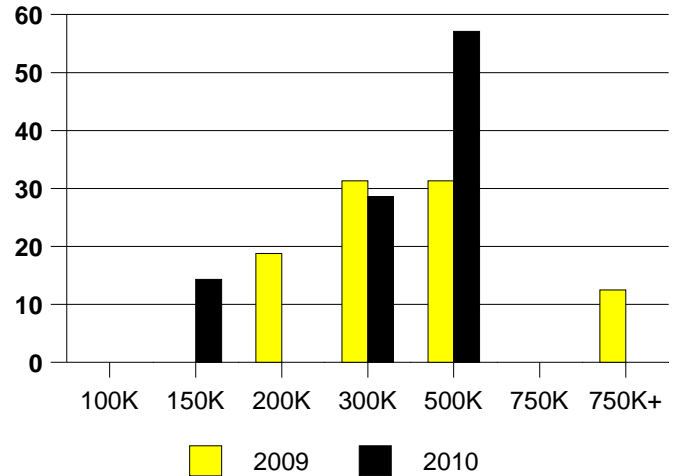
NTREIS Sold informaton as of 04/02/2010

	<u>2009</u>	<u>2010</u>
Total Sold Volume	\$ 5,725,850	\$ 2,056,750
Number of Sales	16	7
Median Sale Price	\$ 242,000	\$ 312,500

**DAYS ON THE MARKET (ARGYLE)**



**ARGYLE MKT SHARE BY PRICE RANGE**



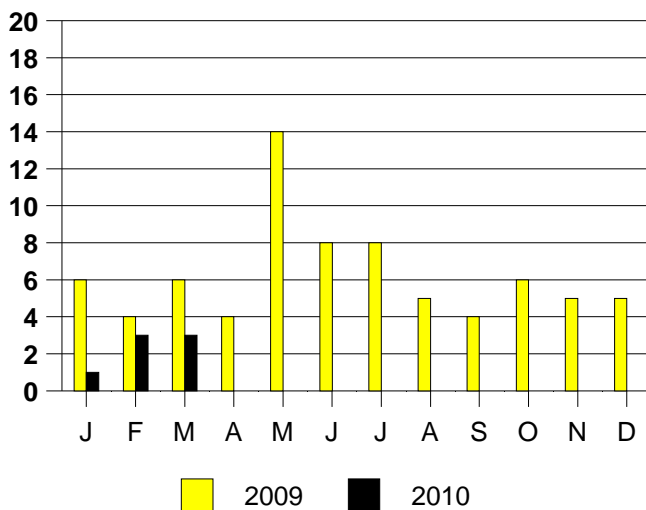
**SALE/LIST PRICE RATIO**

0K-100K	NONE
101K-150K	88.0%
151K-200K	NONE
201K-300K	97.9%
301K-500K	96.6%
501K-750K	NONE
751K+	NONE

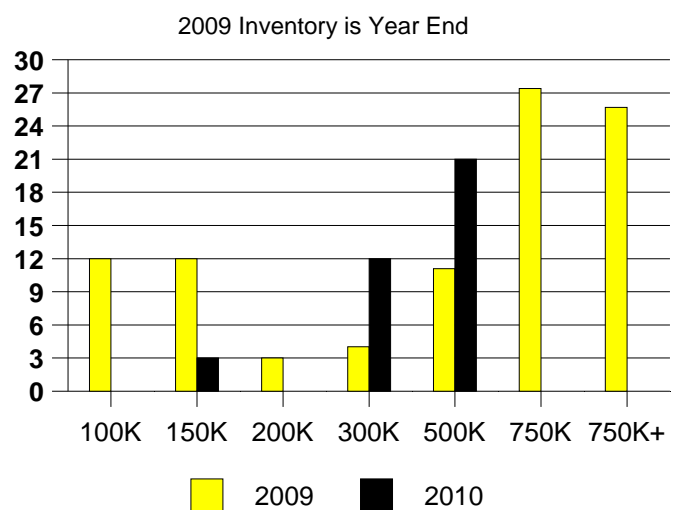
**AVERAGE OVERPRICING**  
Original List Price to Sale Price

2009	8.0%
2010	12.3%

**ARGYLE MONTHLY SALES**

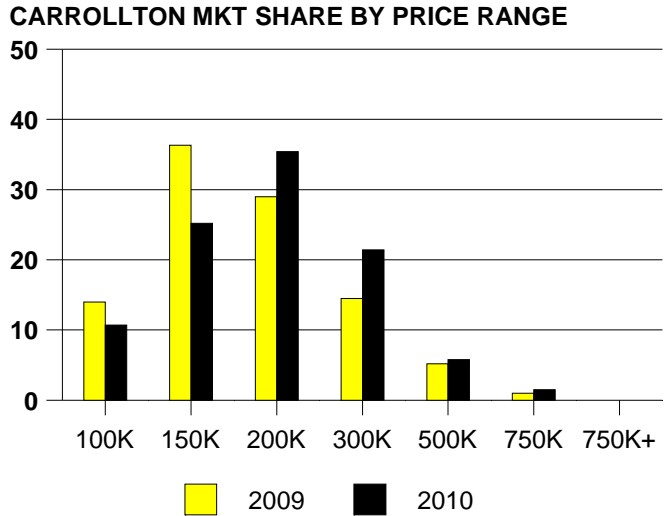
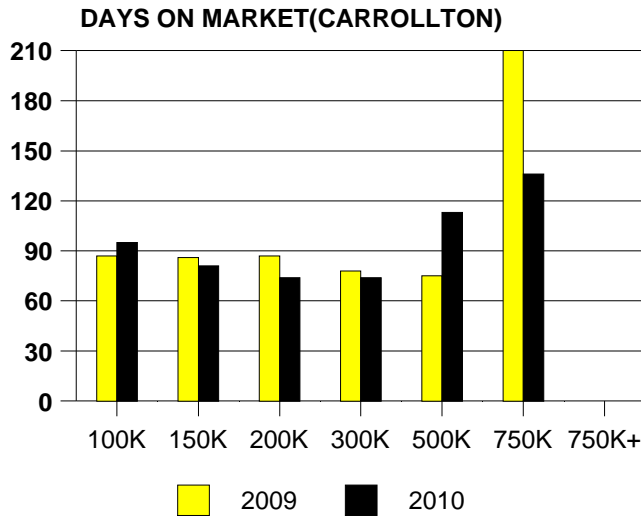


Inventory not shown where no sales  
**ARGYLE MONTHS OF INVENTORY**



NTREIS Sold informaton as of 04/02/2010

	<u>2009</u>	<u>2010</u>
Total Sold Volume	\$ 32,624,178	\$ 37,409,904
Number of Sales	193	206
Median Sale Price	\$ 150,800	\$ 165,950



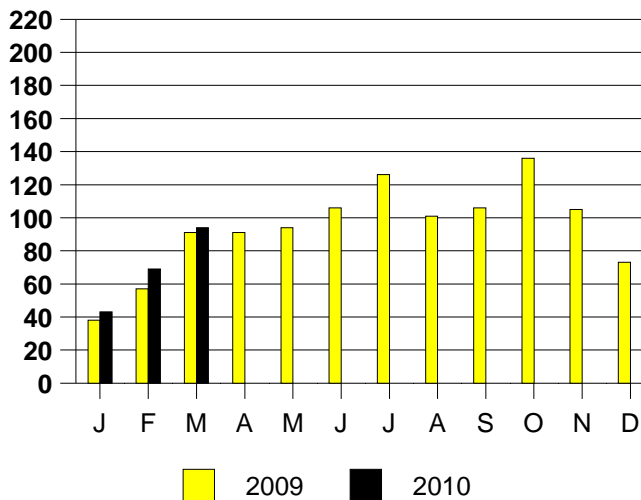
**SALE/LIST PRICE RATIO**

0K-100K	93.7%
101K-150K	98.8%
151K-200K	97.9%
201K-300K	97.0%
301K-500K	96.4%
501K-750K	96.6%
751K+	NONE

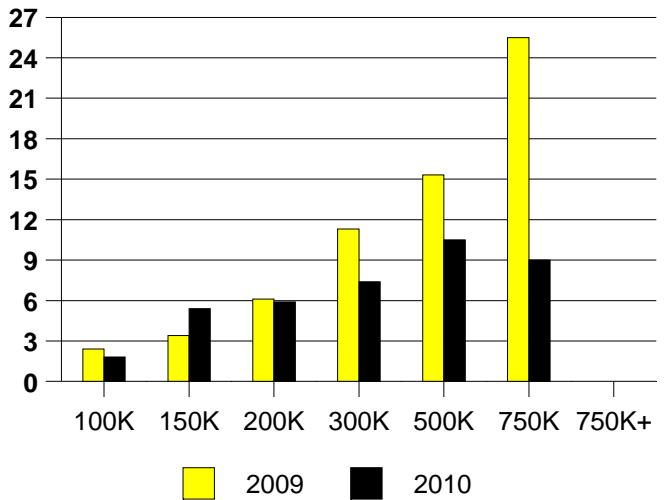
**AVERAGE OVERPRICING**  
Original List Price to Sale Price

2009	7.0%
2010	7.0%

**CARROLLTON MONTHLY SALES**



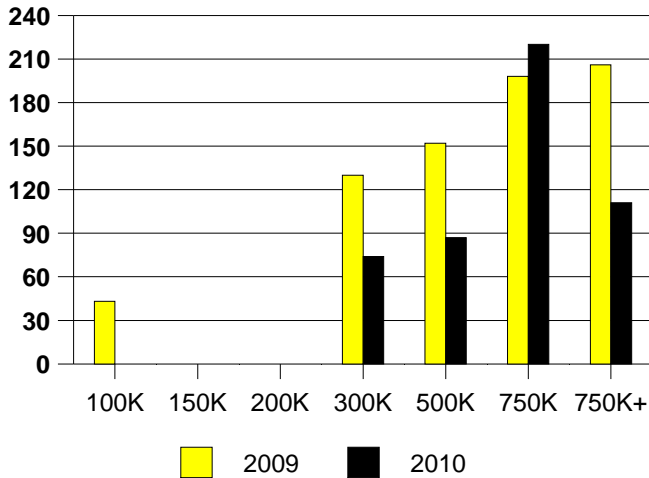
**CARROLLTON MONTHS OF INVENTORY**



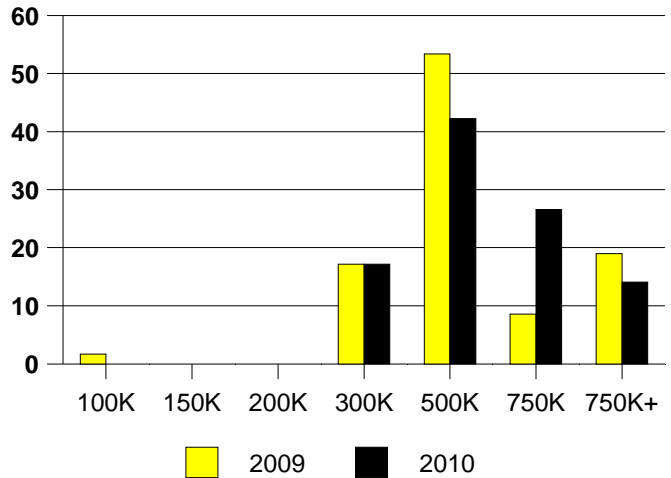
NTREIS Sold informaton as of 04/02/2010

	<u>2009</u>	<u>2010</u>
Total Sold Volume	\$ 30,763,240	\$ 30,626,270
Number of Sales	58	64
Median Sale Price	\$ 415,250	\$ 425,000

**DAYS ON THE MARKET (COLLEYVILLE)**



**COLLEYVILLE MKT SHARE BY PRICE RANGE**



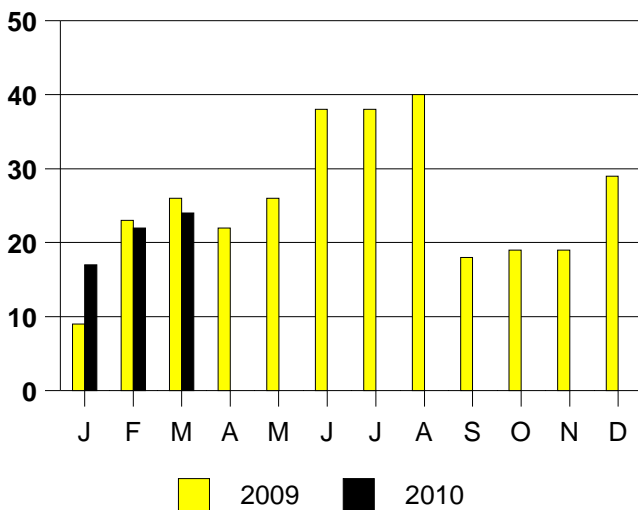
**SALE/LIST PRICE RATIO**

0K-100K	NONE
101K-150K	NONE
151K-200K	NONE
201K-300K	97.7%
301K-500K	97.2%
501K-750K	95.9%
751K+	96.1%

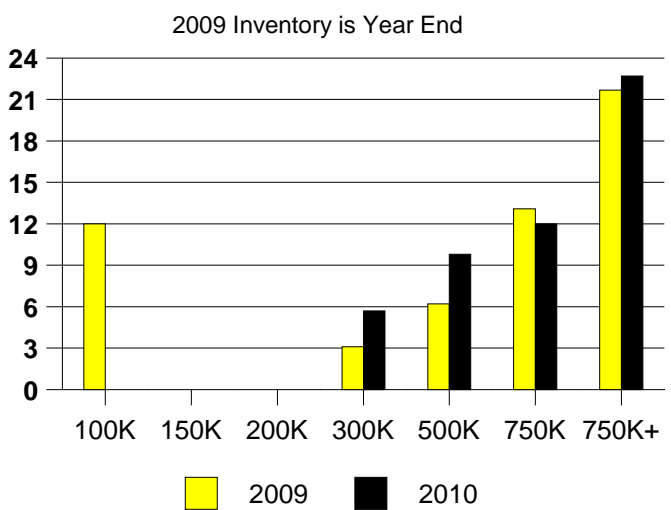
**AVERAGE OVERPRICING**  
Original List Price to Sale Price

2009	8.8%
2010	7.5%

**COLLEYVILLE MONTHLY SALES**



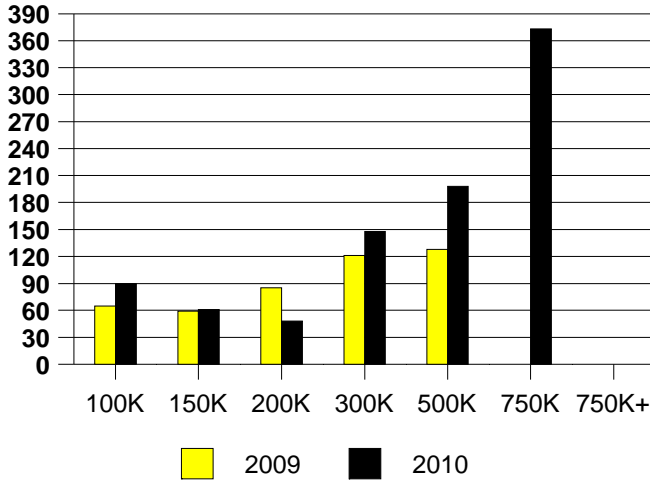
**COLLEYVILLE MONTHS OF INVENTORY**  
Inventory not shown where no sales  
2009 Inventory is Year End



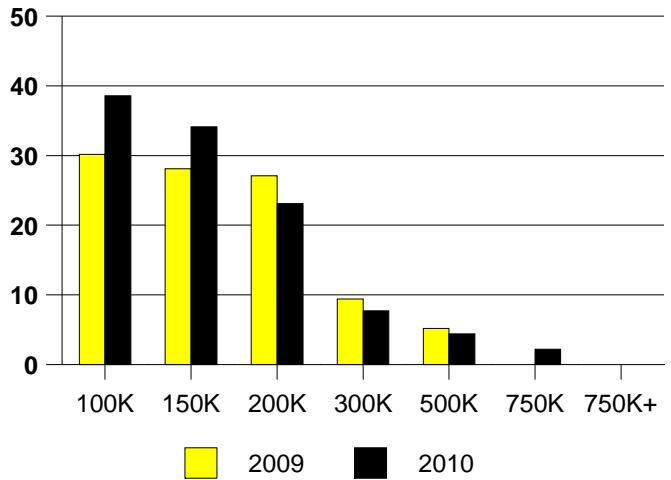
NTREIS Sold informaton as of 04/02/2010

	2009	2010
Total Sold Volume	\$ 14,176,376	\$ 14,039,553
Number of Sales	96	91
Median Sale Price	\$ 138,500	\$ 130,000

DAYS ON THE MARKET (COLONY)



COLONY MKT SHARE BY PRICE RANGE



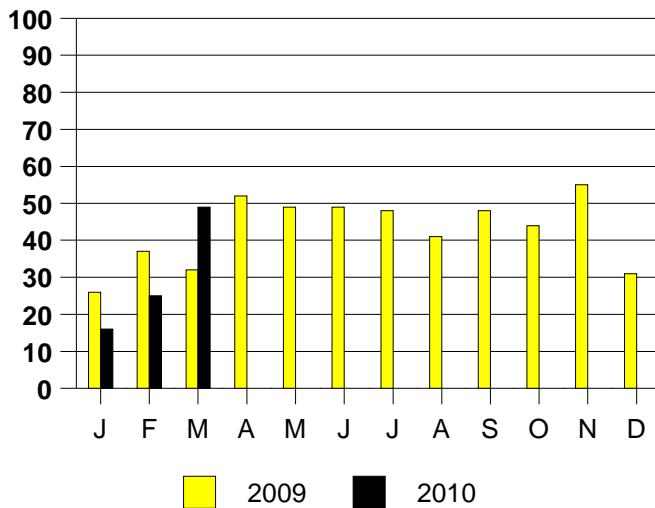
SALE/LIST PRICE RATIO

0K-100K	96.5%
101K-150K	99.6%
151K-200K	99.6%
201K-300K	96.3%
301K-500K	94.1%
501K-750K	94.5%
751K+	NONE

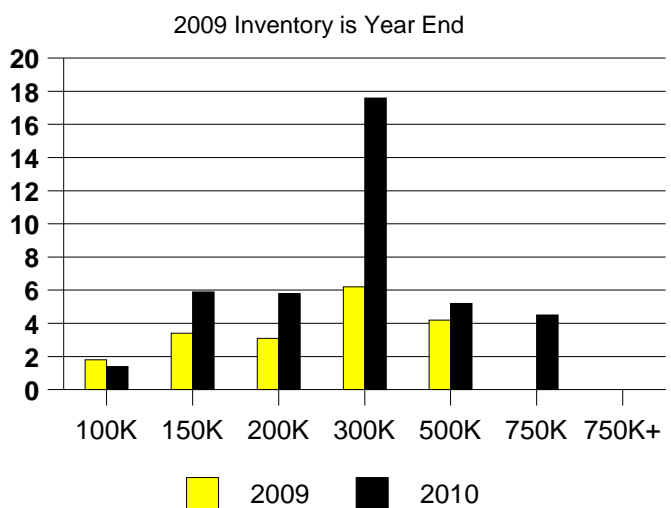
AVERAGE OVERPRICING  
Original List Price to Sale Price

2009	8.4%
2010	5.3%

THE COLONY MONTHLY SALES



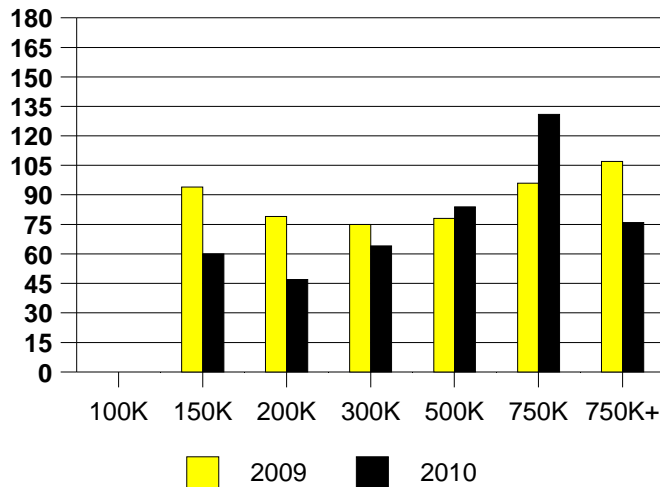
Inventory not shown where no sales  
THE COLONY MONTHS OF INVENTORY



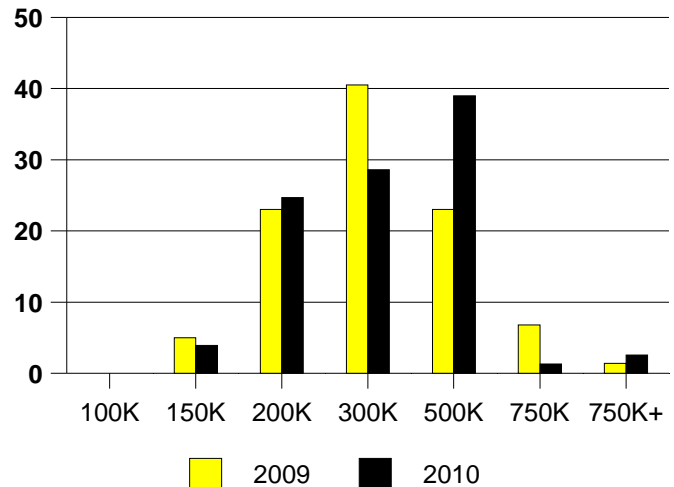
NTREIS Sold informaton as of 04/02/2010

	<u>2009</u>	<u>2010</u>
Total Sold Volume	\$ 21,565,606	\$ 22,697,018
Number of Sales	74	77
Median Sale Price	\$ 264,250	\$ 270,000

**DAYS ON THE MARKET (COPPELL)**



**COPPELL MKT SHARE BY PRICE RANGE**



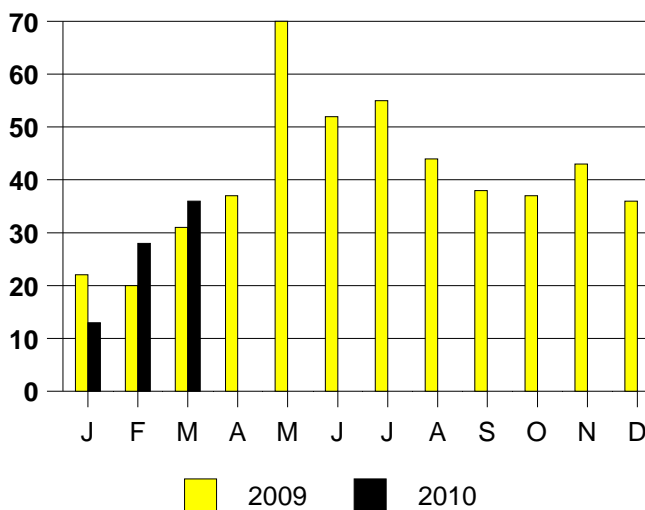
**SALE/LIST PRICE RATIO**

0K-100K	NONE
101K-150K	101.4%
151K-200K	99.2%
201K-300K	98.0%
301K-500K	96.8%
501K-750K	96.0%
751K+	95.4%

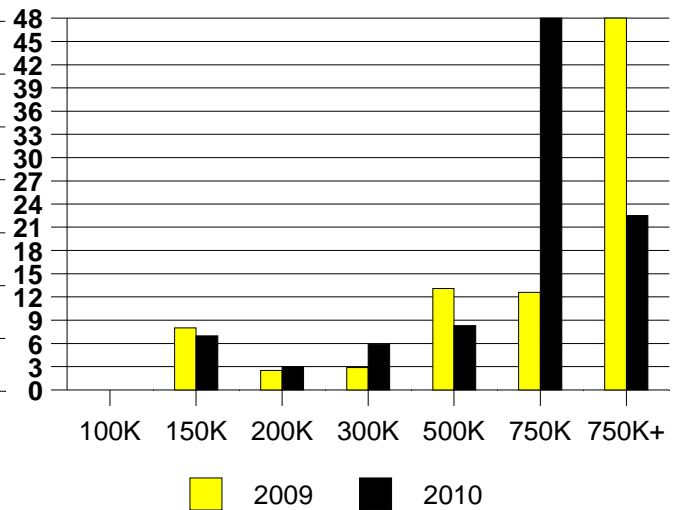
**AVERAGE OVERPRICING**  
Original List Price to Sale Price

2009	5.6%
2010	5.1%

**COPPELL MONTHLY SALES**



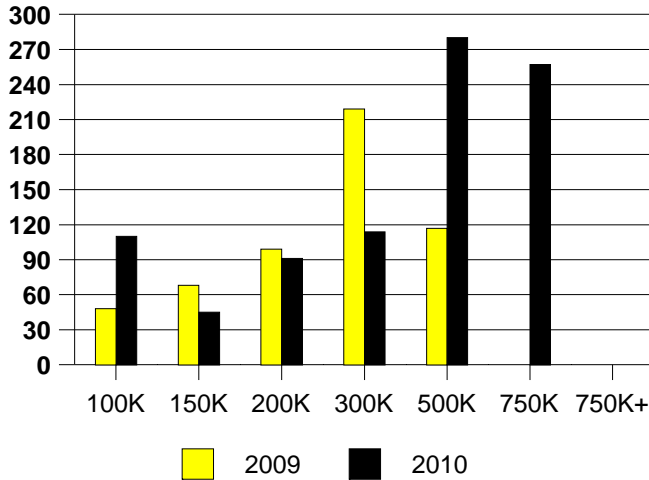
Inventory not shown where no sales  
**COPPELL MONTHS OF INVENTORY**



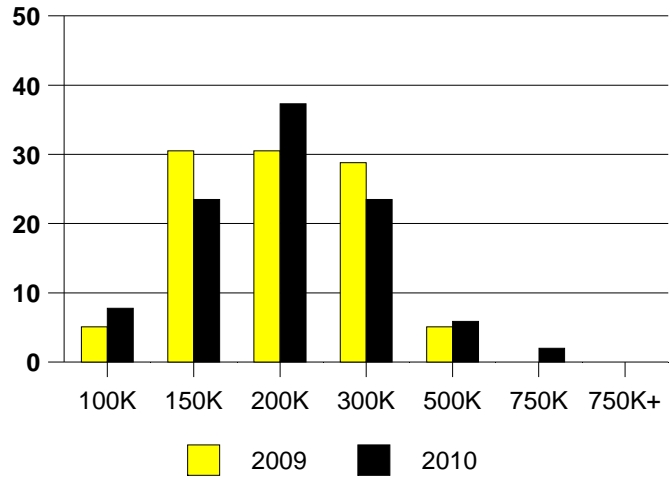
NTREIS Sold informaton as of 04/02/2010

	2009	2010
Total Sold Volume	\$ 10,653,698	\$ 9,645,350
Number of Sales	59	51
Median Sale Price	\$ 161,900	\$ 166,250

DAYS ON THE MARKET (CORINTH)



CORINTH MKT SHARE BY PRICE RANGE



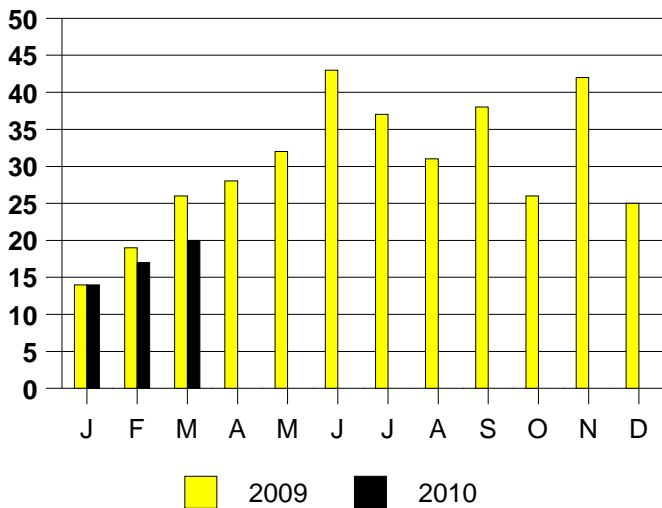
SALE/LIST PRICE RATIO

0K-100K	88.2%
101K-150K	99.7%
151K-200K	98.3%
201K-300K	98.3%
301K-500K	100.0%
501K-750K	104.5%
751K+	NONE

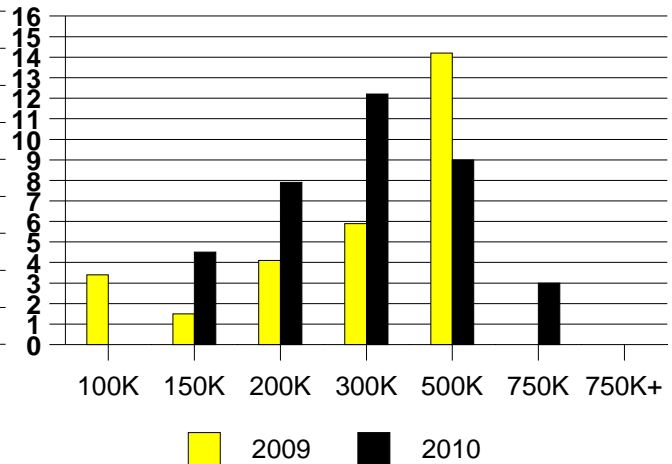
AVERAGE OVERPRICING  
Original List Price to Sale Price

2009	8.3%
2010	5.5%

CORINTH MONTHLY SALES



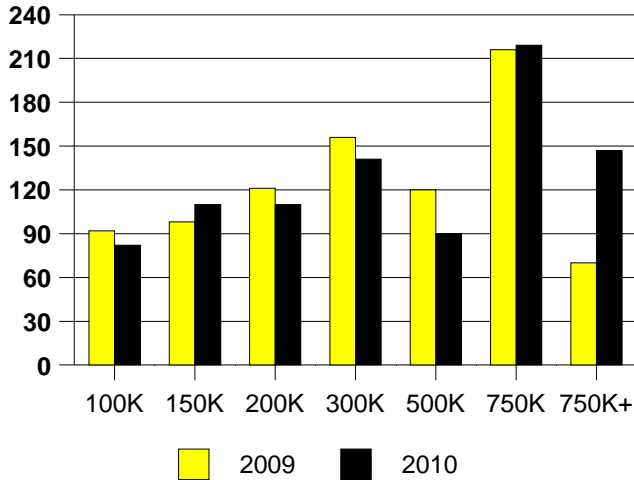
Inventory not shown where no sales  
CORINTH MONTHS OF INVENTORY  
2009 Inventory is Year End



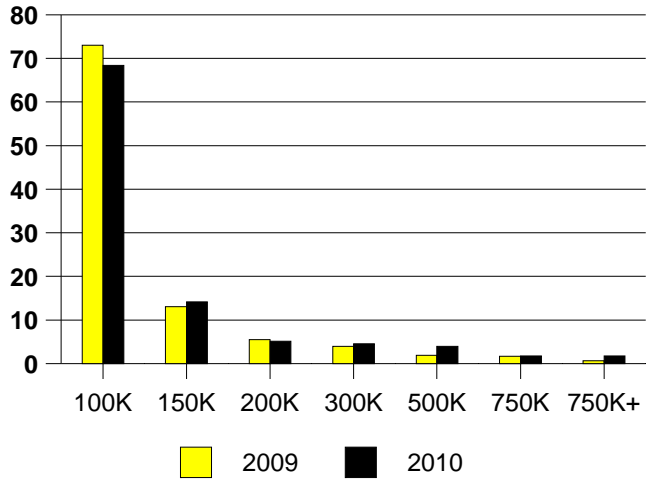
NTREIS Sold informaton as of 04/02/2010

	2009	2010
Total Sold Volume	\$ 55,574,740	\$ 61,345,704
Number of Sales	578	500
Median Sale Price	\$ 59,950	\$ 68,750

DAYS ON THE MARKET (DALLAS)



DALLAS MKT SHARE BY PRICE RANGE



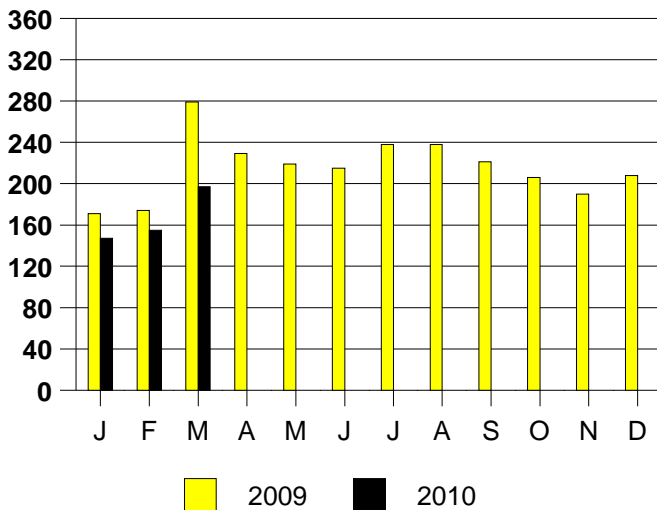
SALE/LIST PRICE RATIO

0K-100K	96.9%
101K-150K	98.6%
151K-200K	96.8%
201K-300K	96.6%
301K-500K	97.2%
501K-750K	95.9%
751K+	93.4%

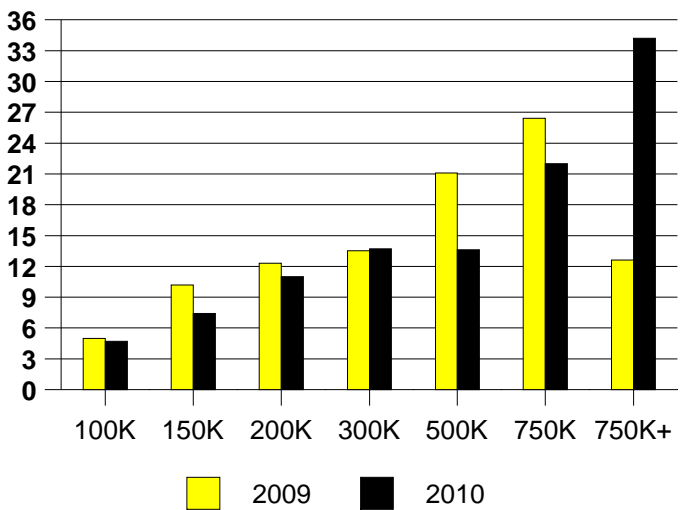
AVERAGE OVERPRICING  
Original List Price to Sale Price

2009	22.2%
2010	12.9%

DALLAS MONTHLY SALES



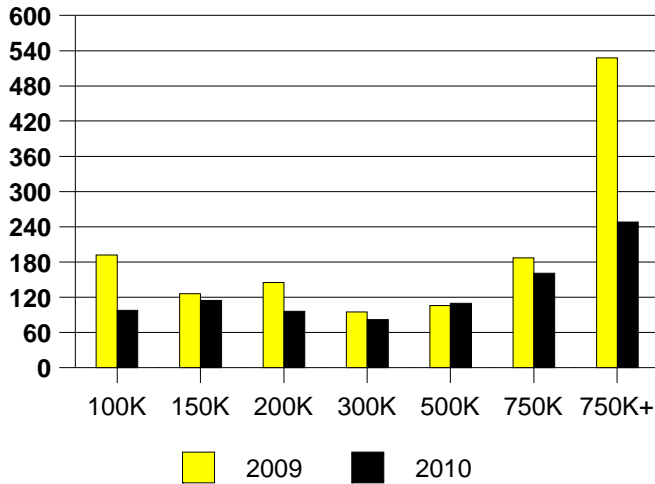
Inventory not shown where no sales  
DALLAS MONTHS OF INVENTORY



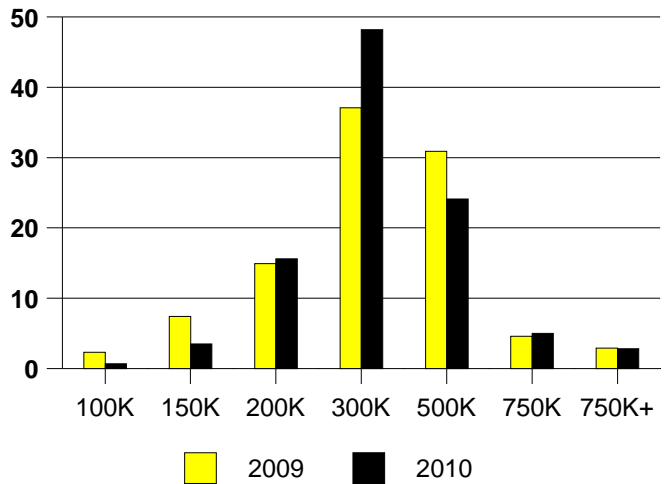
NTREIS Sold informaton as of 04/02/2010

	<u>2009</u>	<u>2010</u>
Total Sold Volume	\$ 54,903,984	\$ 41,887,644
Number of Sales	175	141
Median Sale Price	\$ 263,000	\$ 250,900

**DAYS ON THE MARKET (AREA 10)**



**AREA 10 MKT SHARE BY PRICE RANGE**



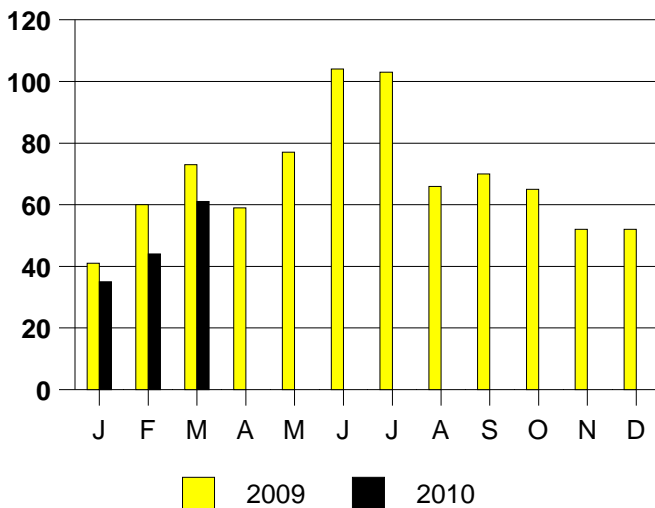
**SALE/LIST PRICE RATIO**

0K-100K	88.1%
101K-150K	92.4%
151K-200K	95.6%
201K-300K	96.4%
301K-500K	96.8%
501K-750K	94.0%
751K+	93.7%

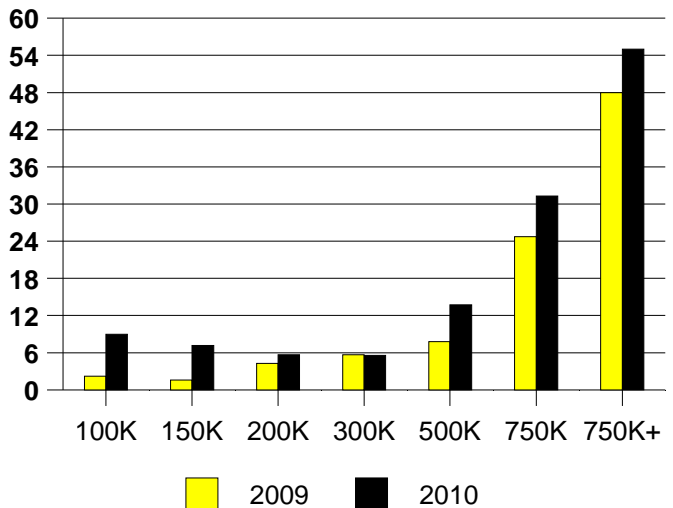
**AVERAGE OVERPRICING**  
Original List Price to Sale Price

2009	11.1%
2010	8.6%

**AREA 10 MONTHLY SALES**



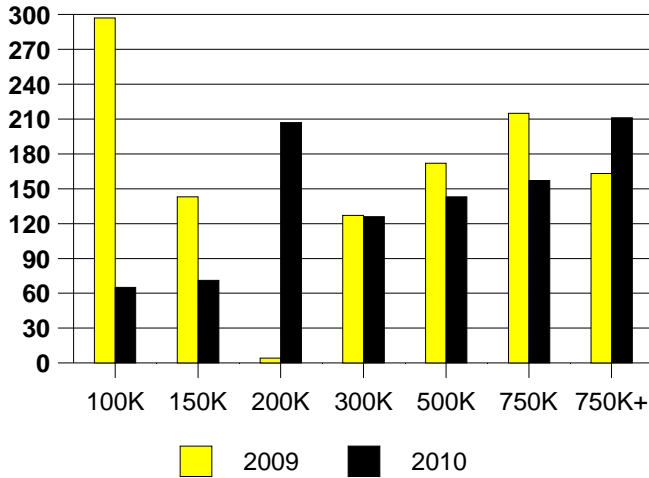
**Inventory not shown where no sales**  
**AREA 10 MONTHS OF INVENTORY**



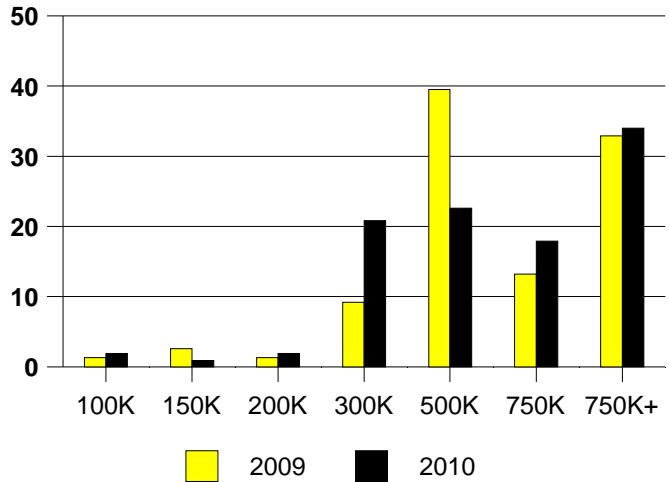
NTREIS Sold informaton as of 04/02/2010

	2009	2010
Total Sold Volume	\$ 67,772,552	\$ 74,884,496
Number of Sales	76	106
Median Sale Price	\$ 461,500	\$ 527,450

DAYS ON THE MARKET (DALLAS NORTH)



DALLAS N MKT SHARE BY PRICE RANGE



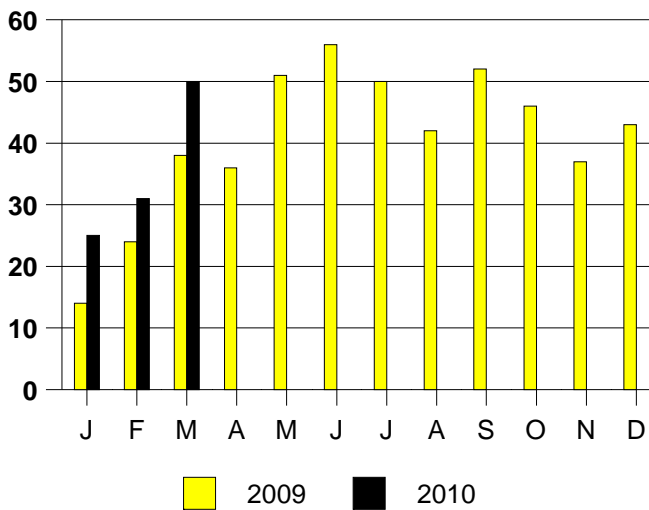
SALE/LIST PRICE RATIO

0K-100K	71.3%
101K-150K	96.8%
151K-200K	91.0%
201K-300K	92.8%
301K-500K	94.8%
501K-750K	95.3%
751K+	94.6%

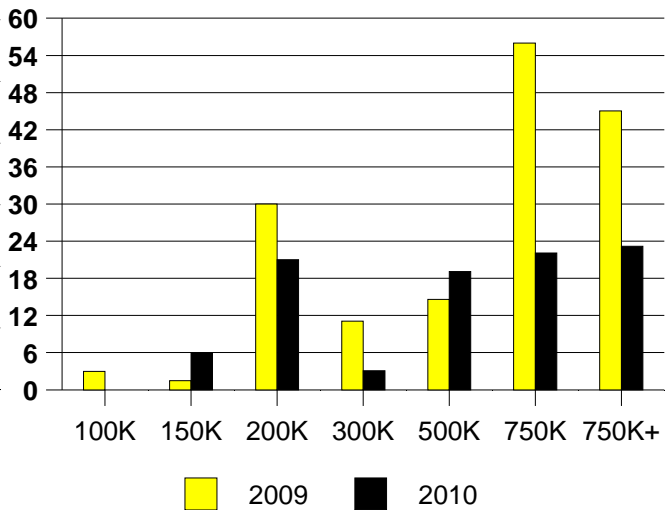
AVERAGE OVERPRICING  
Original List Price to Sale Price

2009	14.9%
2010	16.2%

DALLAS NORTH MONTHLY SALES



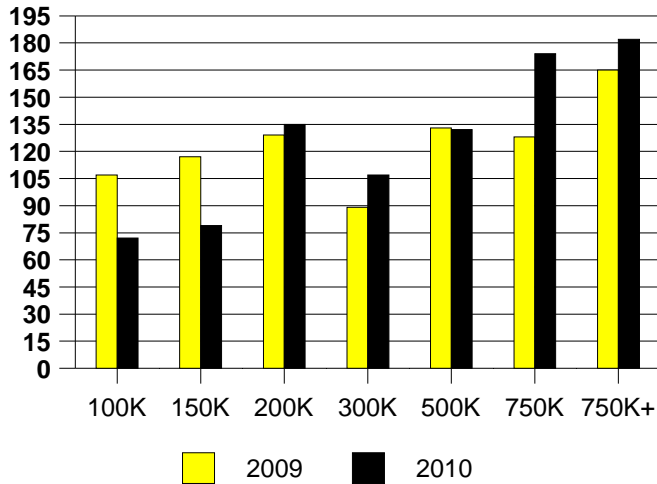
DALLAS NORTH MONTHS OF INVENTORY



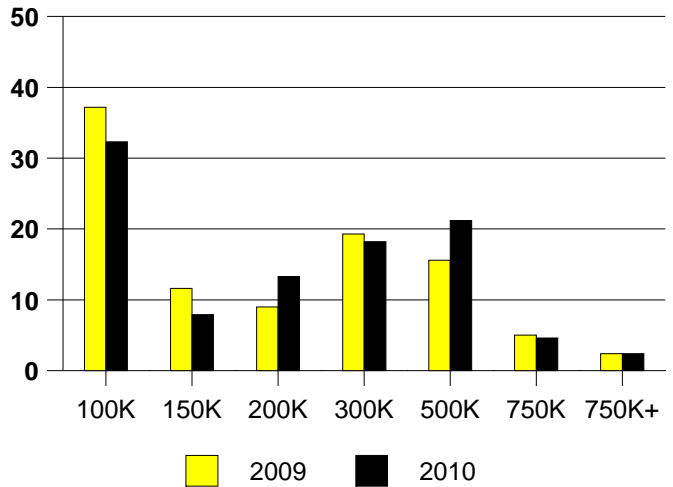
NTREIS Sold informaton as of 04/02/2010

	2009	2010
Total Sold Volume	\$ 78,430,056	\$ 84,729,128
Number of Sales	379	368
Median Sale Price	\$ 159,000	\$ 181,750

DAYS ON THE MARKET (DALLAS EAST)



DALLAS NE MKT SHARE BY PRICE RANGE



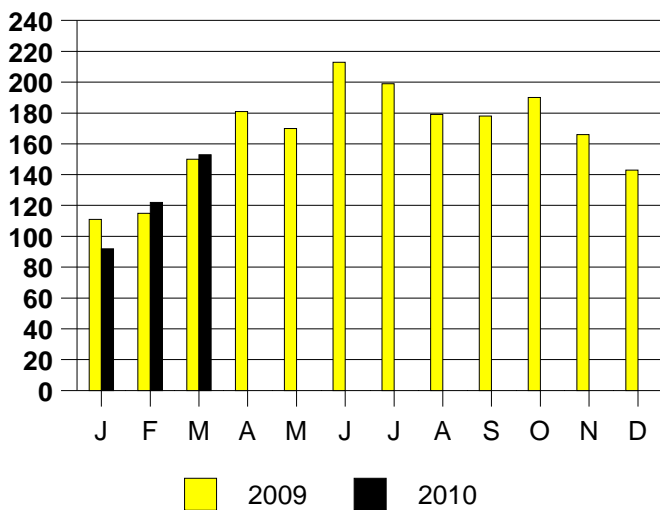
SALE/LIST PRICE RATIO

0K-100K	96.0%
101K-150K	97.0%
151K-200K	96.0%
201K-300K	96.2%
301K-500K	96.0%
501K-750K	95.8%
751K+	95.0%

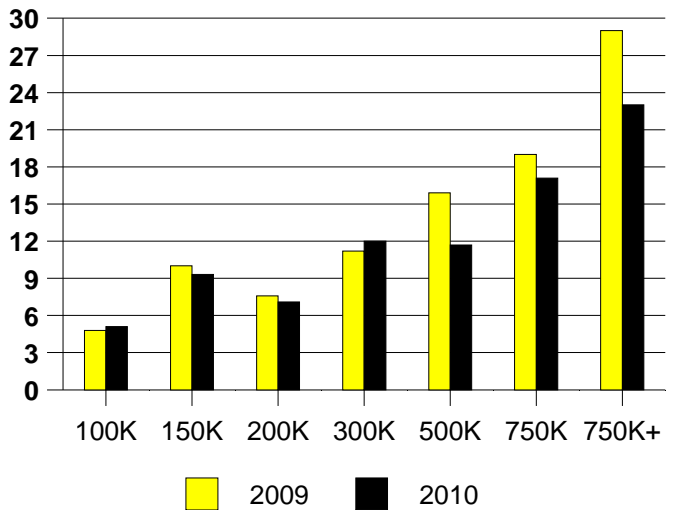
AVERAGE OVERPRICING  
Original List Price to Sale Price

2009	18.5%
2010	10.6%

DALLAS EAST MONTHLY SALES



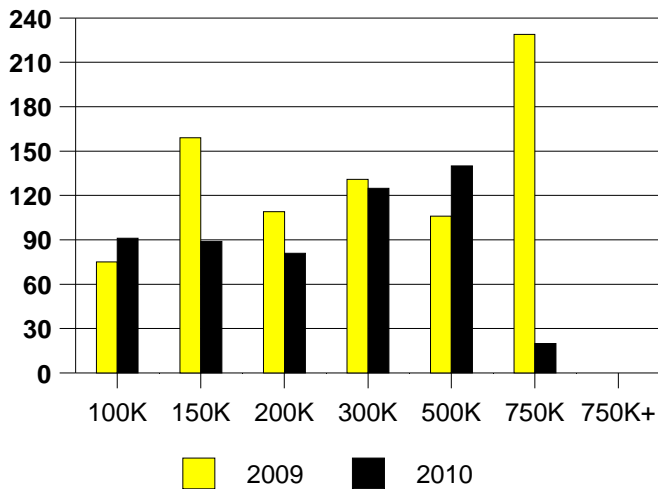
Inventory not shown where no sales  
DALLAS EAST MONTHS OF INVENTORY



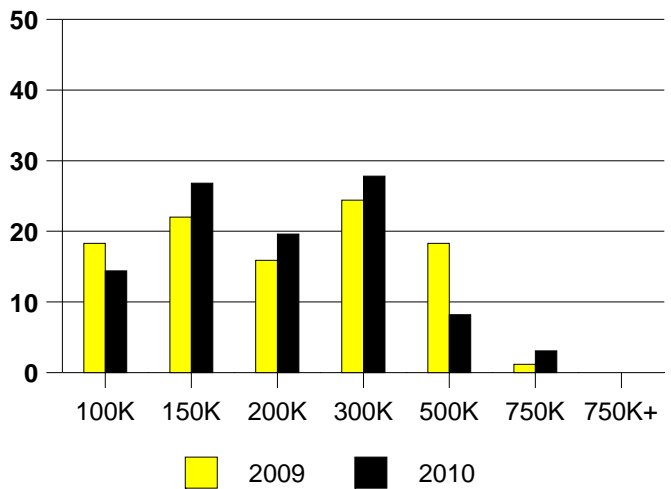
NTREIS Sold informaton as of 04/02/2010

	2009	2010
Total Sold Volume	\$ 17,142,436	\$ 19,206,828
Number of Sales	82	97
Median Sale Price	\$ 175,250	\$ 177,000

DAYS ON THE MARKET (AREA 16)



AREA 16 MKT SHARE BY PRICE RANGE



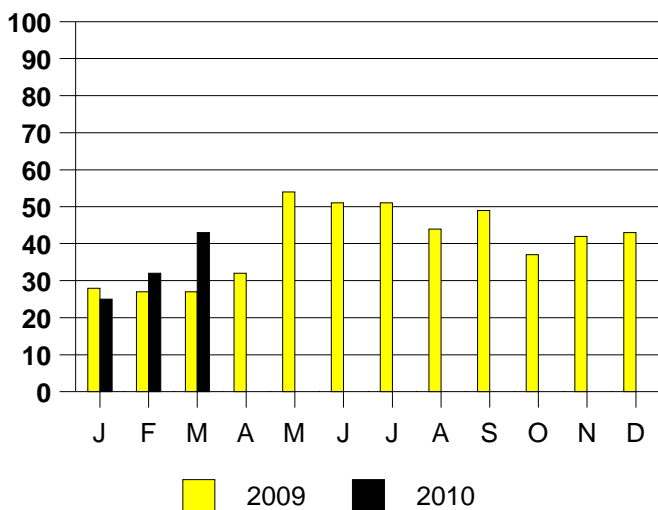
SALE/LIST PRICE RATIO

0K-100K	96.2%
101K-150K	94.4%
151K-200K	96.4%
201K-300K	96.0%
301K-500K	95.9%
501K-750K	95.5%
751K+	NONE

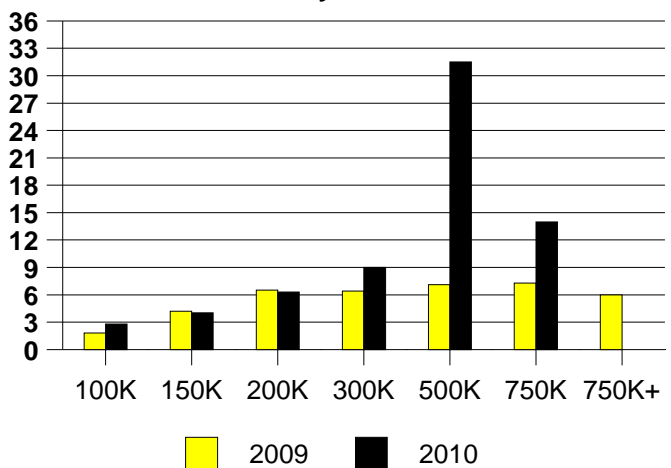
AVERAGE OVERPRICING  
Original List Price to Sale Price

2009	15.1%
2010	10.9%

AREA 16 MONTHLY SALES



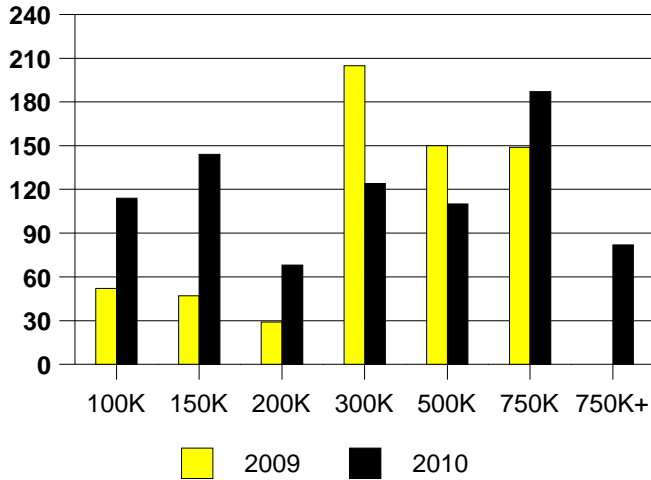
Inventory not shown where no sales  
AREA 16 MONTHS OF INVENTORY  
2009 Inventory is Year End



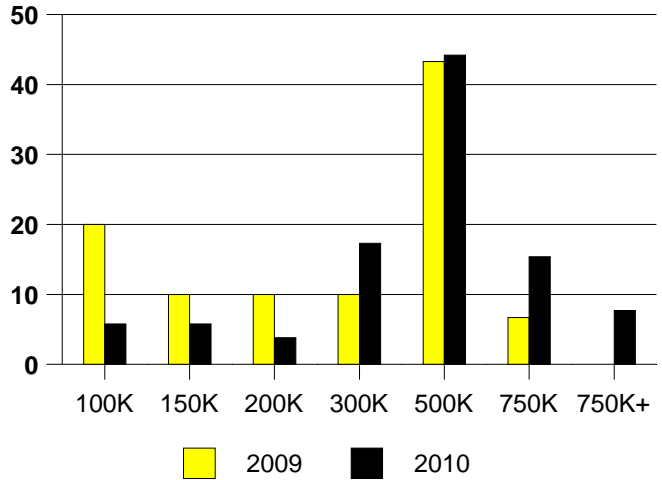
NTREIS Sold informaton as of 04/02/2010

	2009	2010
Total Sold Volume	\$ 8,492,610	\$ 23,532,376
Number of Sales	30	52
Median Sale Price	\$ 311,250	\$ 365,450

DAYS ON THE MARKET (DALLAS OAK LAWN)



DALLAS NE MKT SHARE BY PRICE RANGE



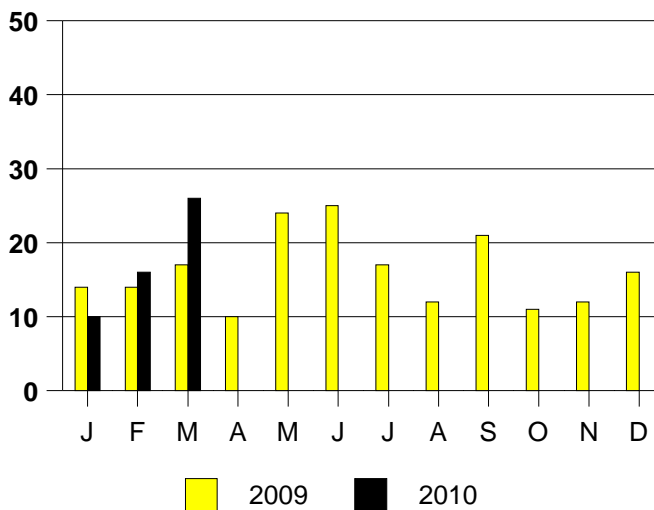
SALE/LIST PRICE RATIO

0K-100K	85.5%
101K-150K	98.1%
151K-200K	93.9%
201K-300K	95.4%
301K-500K	95.9%
501K-750K	97.1%
751K+	100.0%

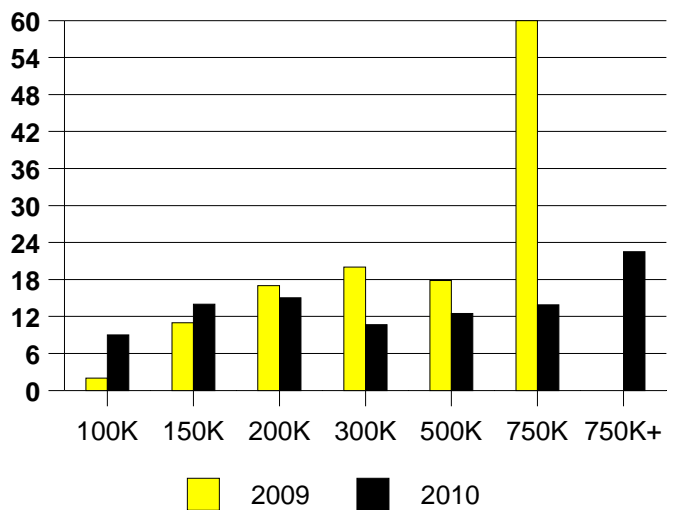
AVERAGE OVERPRICING  
Original List Price to Sale Price

2009	11.0%
2010	10.2%

DALLAS OAKLAWN MONTHLY SALES



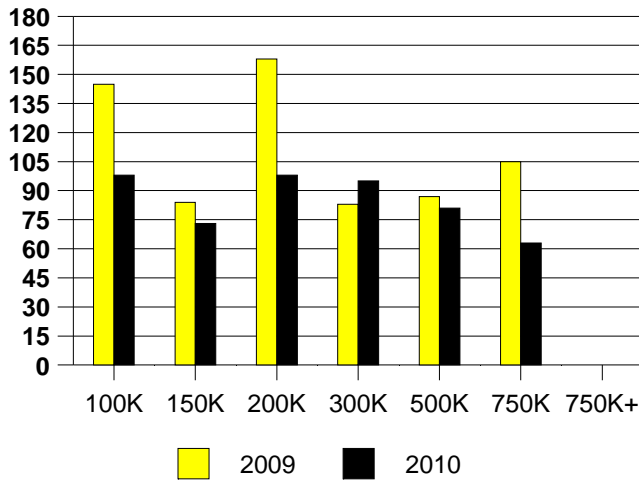
DALLAS OAKLAWN MONTHS OF INVENTORY



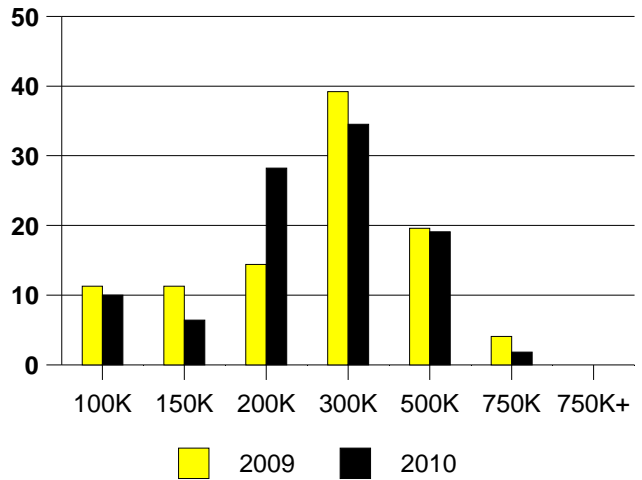
NTREIS Sold informaton as of 04/02/2010

	<u>2009</u>	<u>2010</u>
Total Sold Volume	\$ 23,019,372	\$ 26,067,906
Number of Sales	97	110
Median Sale Price	\$ 226,000	\$ 213,500

**DAYS ON THE MARKET (DALLAS NE)**



**DALLAS NE MKT SHARE BY PRICE RANGE**



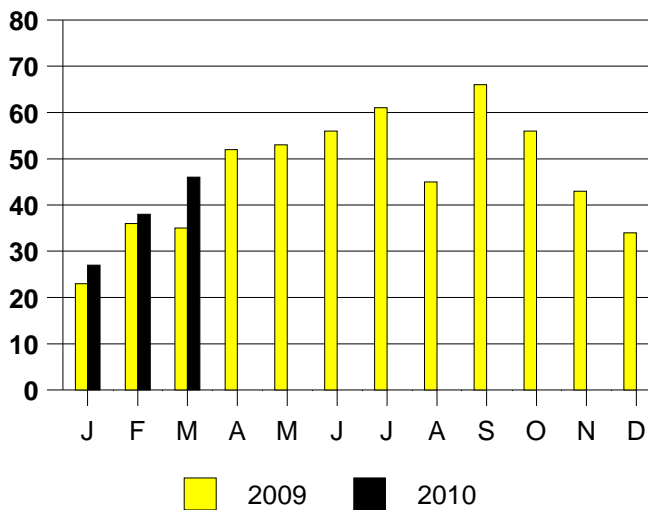
**SALE/LIST PRICE RATIO**

0K-100K	96.7%
101K-150K	94.6%
151K-200K	96.6%
201K-300K	97.9%
301K-500K	97.0%
501K-750K	96.5%
751K+	NONE

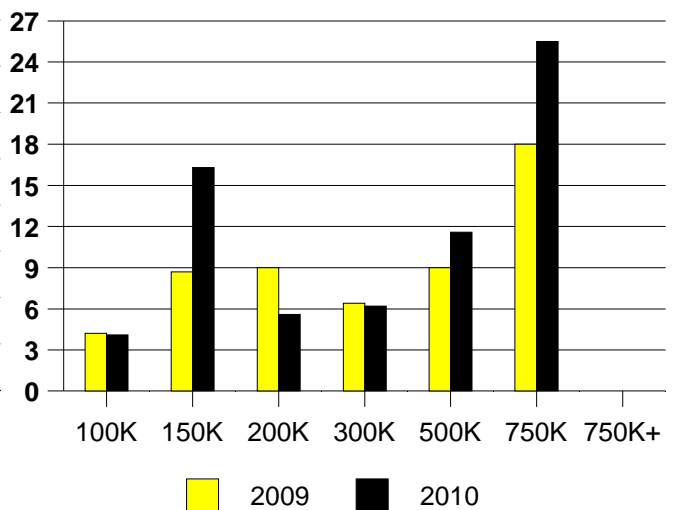
**AVERAGE OVERPRICING**  
Original List Price to Sale Price

2009	10.5%
2010	8.2%

**DALLAS NE MONTHLY SALES**



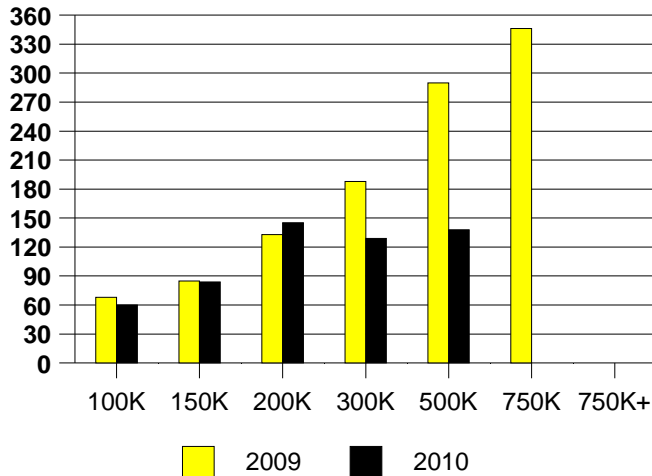
Inventory not shown where no sales  
**DALLAS NE MONTHS OF INVENTORY**



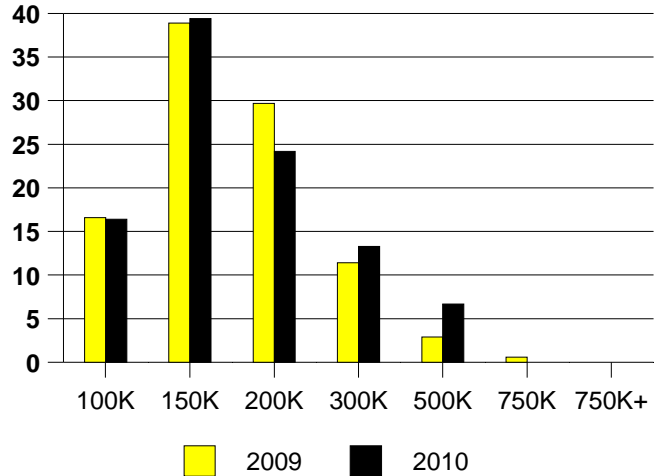
NTREIS Sold informaton as of 04/02/2010

	2009	2010
Total Sold Volume	\$ 26,707,684	\$ 26,396,900
Number of Sales	175	165
Median Sale Price	\$ 140,500	\$ 141,000

DAYS ON THE MARKET (DENTON)



DENTON MARKET SHARE BY PRICE RANGE



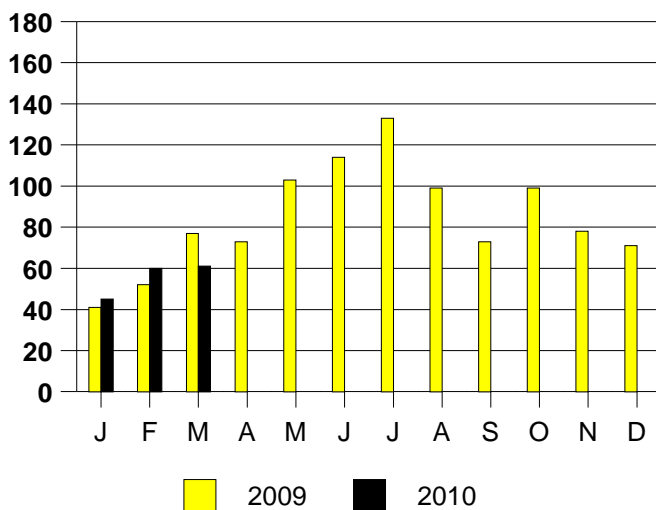
SALE/LIST PRICE RATIO

0K-100K	94.3%
101K-150K	98.9%
151K-200K	97.5%
201K-300K	94.6%
301K-500K	95.4%
501K-750K	NONE
751K+	NONE

AVERAGE OVERPRICING  
Original List Price to Sale Price

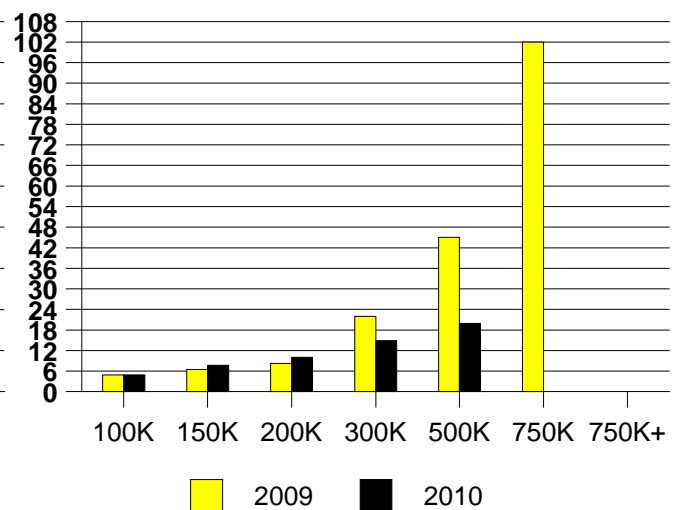
2009	8.9%
2010	6.1%

DENTON MONTHLY SALES



Inventory not shown where no sales

DENTON MONTHS OF INVENTORY



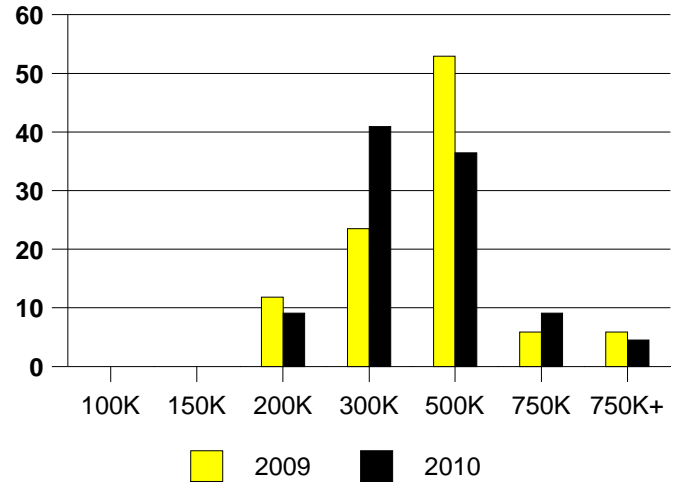
NTREIS Sold informaton as of 04/02/2010

	<u>2009</u>	<u>2010</u>
Total Sold Volume	\$ 6,737,100	\$ 7,670,700
Number of Sales	17	22
Median Sale Price	\$ 365,900	\$ 295,500

**DAYS ON THE MARKET (FAIRVIEW)**



**FAIRVIEW MKT SHARE BY PRICE RANGE**



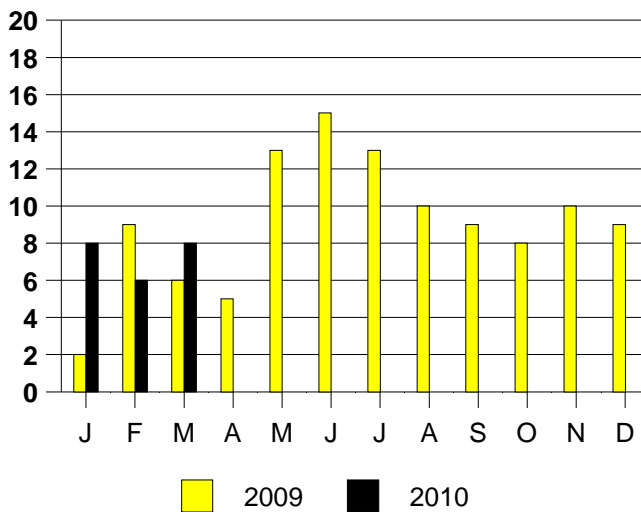
**SALE/LIST PRICE RATIO**

0K-100K	NONE
101K-150K	NONE
151K-200K	95.4%
201K-300K	95.9%
301K-500K	96.4%
501K-750K	98.8%
751K+	100.0%

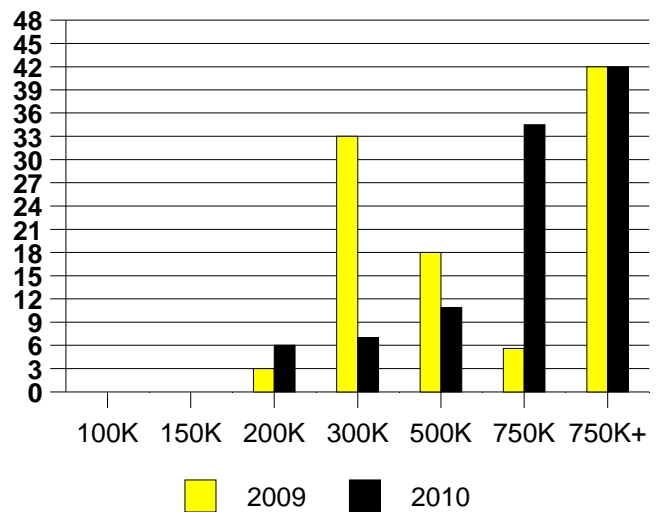
**AVERAGE OVERPRICING**  
Original List Price to Sale Price

2009	10.2%
2010	9.2%

**FAIRVIEW MONTHLY SALES**



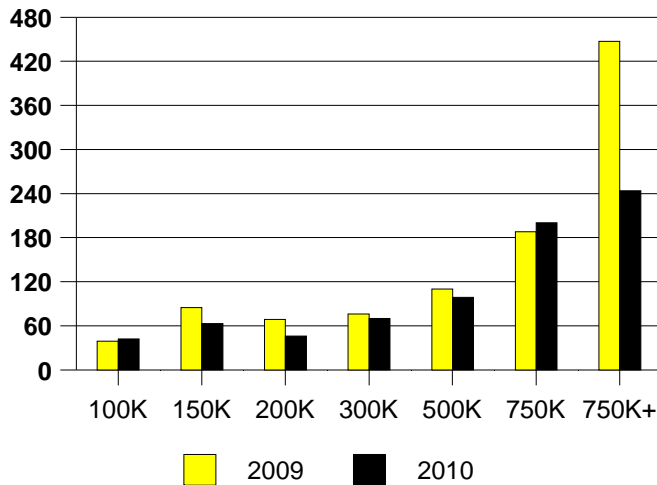
Inventory not shown where no sales  
**FAIRVIEW MONTHS OF INVENTORY**



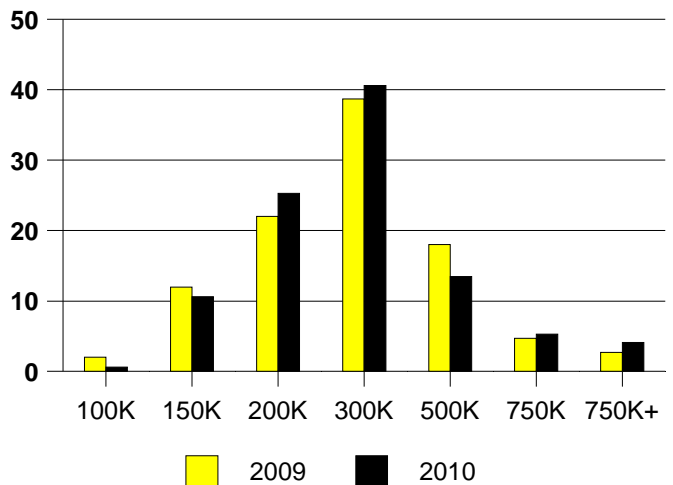
NTREIS Sold informaton as of 04/02/2010

	2009	2010
Total Sold Volume	\$ 42,433,456	\$ 47,886,016
Number of Sales	150	170
Median Sale Price	\$ 236,250	\$ 230,000

**DAYS ON THE MARKET (FLOWER MOUND)**



**FLOWER MOUND MKT SHARE BY PRICE**



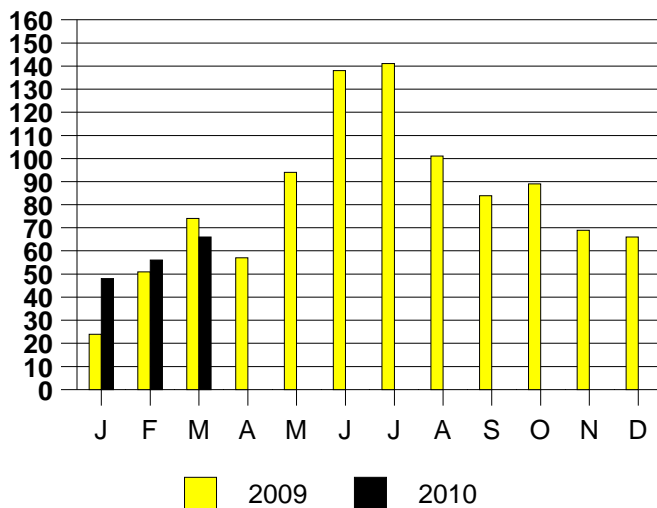
**SALE/LIST PRICE RATIO**

0K-100K	94.7%
101K-150K	98.8%
151K-200K	98.0%
201K-300K	98.4%
301K-500K	96.5%
501K-750K	98.0%
751K+	95.7%

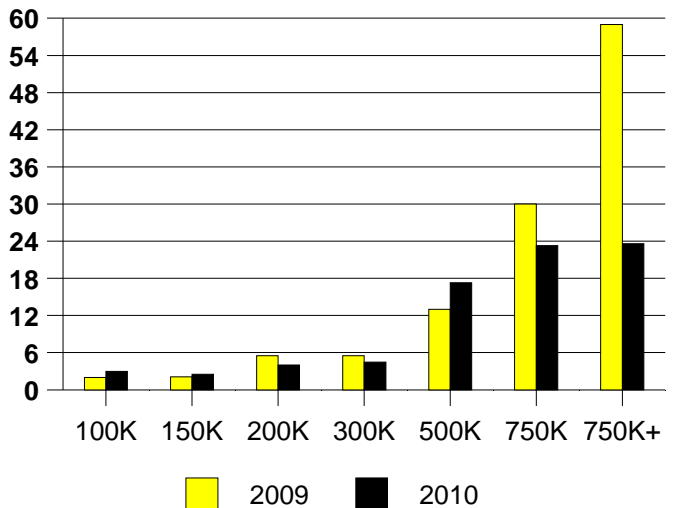
**AVERAGE OVERPRICING**  
Original List Price to Sale Price

2009	5.8%
2010	4.8%

**FLOWER MOUND MONTHLY SALES**



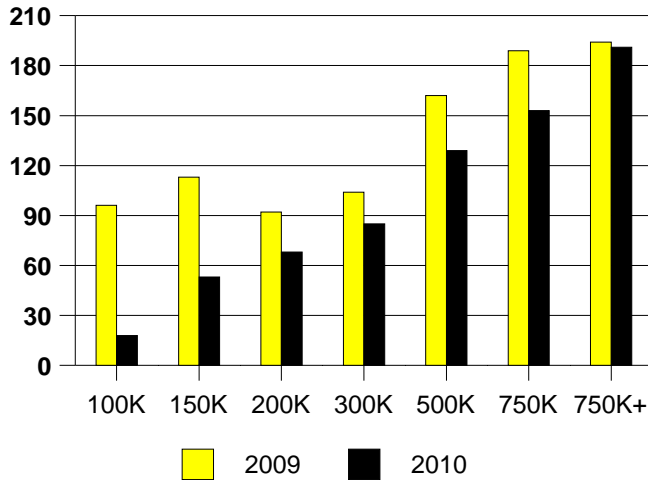
**FLOWER MOUND MONTHS OF INVENTORY**



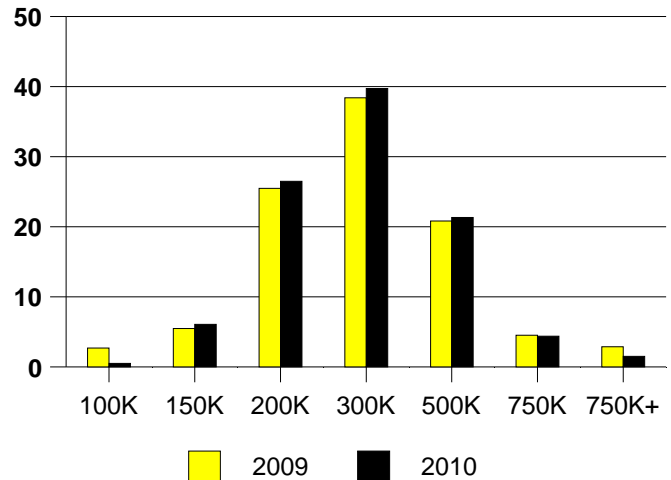
NTREIS Sold informaton as of 04/02/2010

	2009	2010
Total Sold Volume	\$ 138,411,184	\$ 111,828,768
Number of Sales	490	408
Median Sale Price	\$ 240,000	\$ 238,805

DAYS ON MARKET(FRISCO)



FRISCO MKT SHARE BY PRICE RANGE



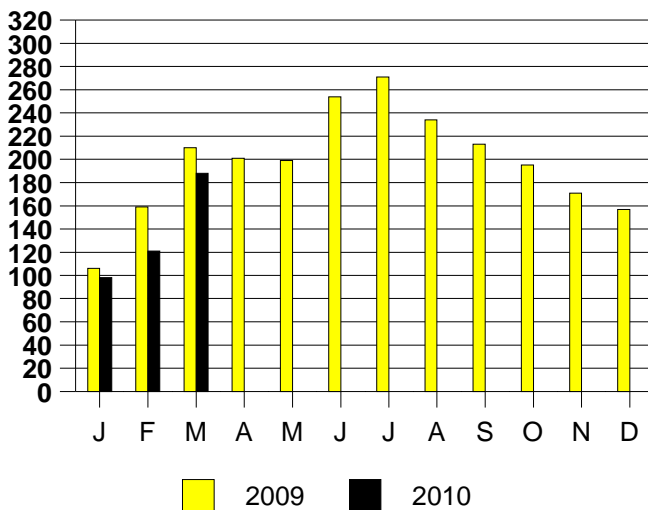
SALE/LIST PRICE RATIO

0K-100K	98.6%
101K-150K	98.6%
151K-200K	98.1%
201K-300K	96.8%
301K-500K	95.7%
501K-750K	96.2%
751K+	92.7%

AVERAGE OVERPRICING  
Original List Price to Sale Price

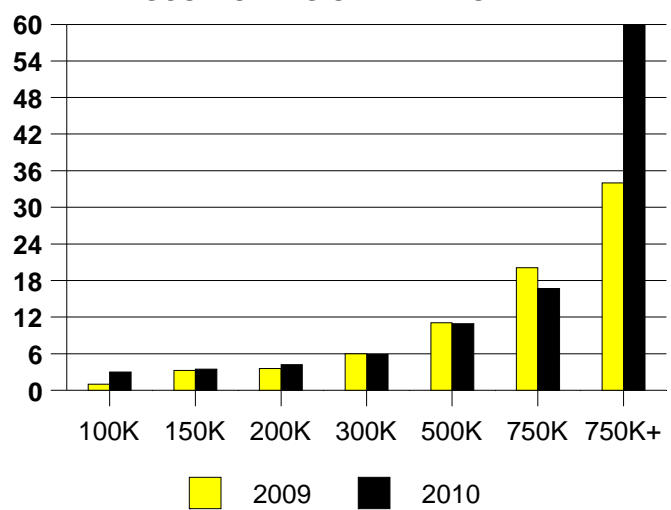
2009	10.3%
2010	6.9%

FRISCO MONTHLY SALES



Inventory not shown where no sales

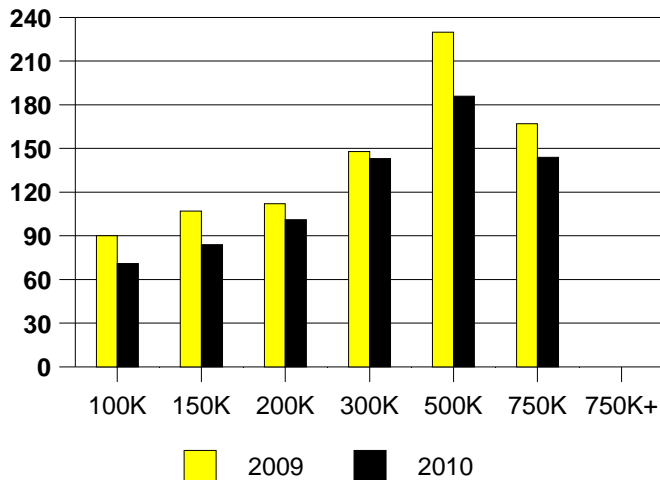
FRISCO MONTHS OF INVENTORY



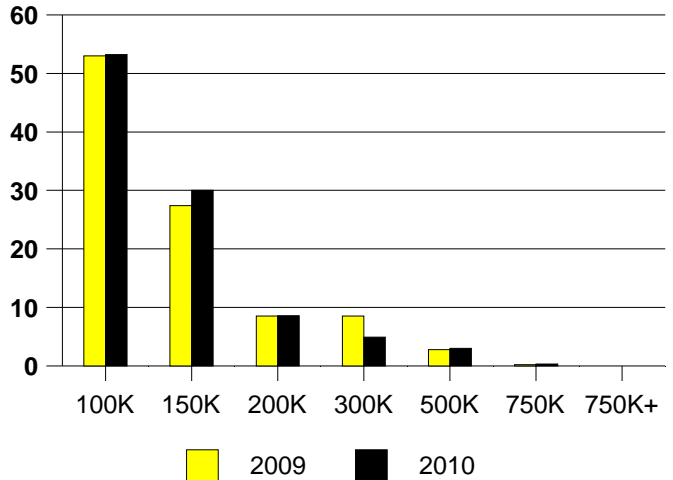
NTREIS Sold informaton as of 04/02/2010

	<u>2009</u>	<u>2010</u>
Total Sold Volume	\$ 48,995,468	\$ 41,433,736
Number of Sales	423	370
Median Sale Price	\$ 98,000	\$ 94,000

**DAYS ON THE MARKET (GARLAND)**



**GARLAND MKT SHARE BY PRICE RANGE**



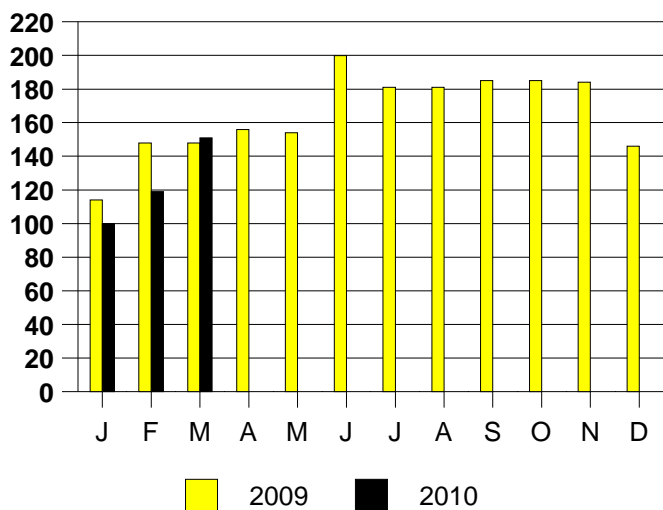
**SALE/LIST PRICE RATIO**

0K-100K	97.5%
101K-150K	97.7%
151K-200K	96.8%
201K-300K	94.9%
301K-500K	94.7%
501K-750K	100.0%
751K+	NONE

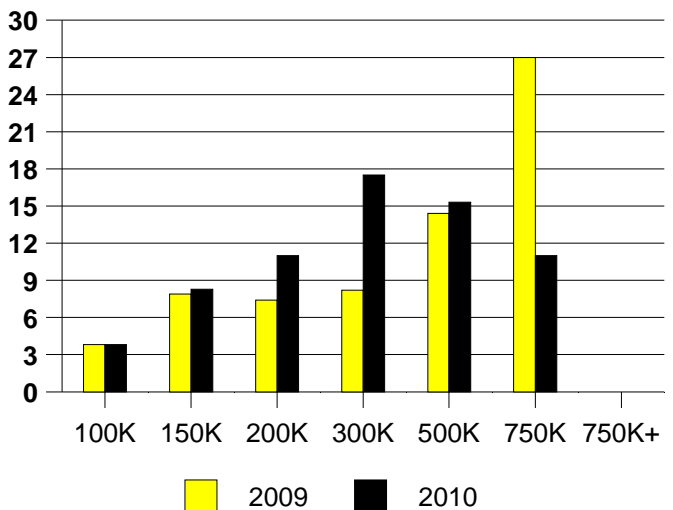
**AVERAGE OVERPRICING**  
Original List Price to Sale Price

2009	12.4%
2010	7.6%

**GARLAND MONTHLY SALES**



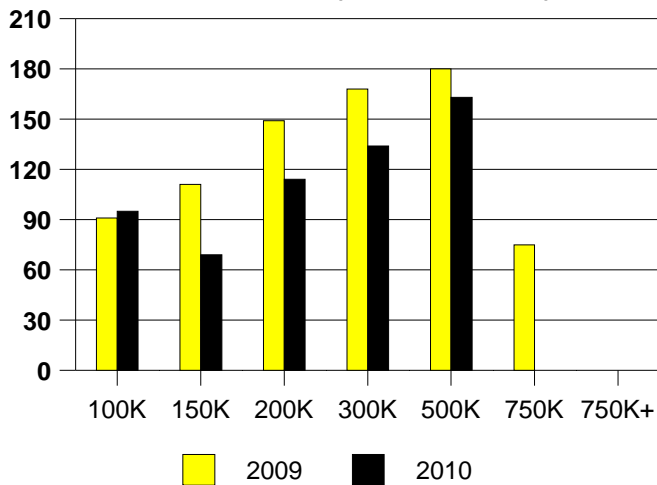
Inventory not shown where no sales  
**GARLAND MONTHS OF INVENTORY**



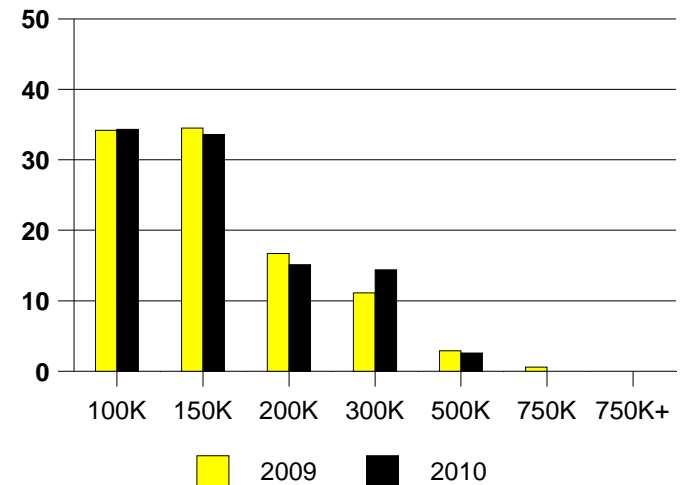
NTREIS Sold informaton as of 04/02/2010

	<u>2009</u>	<u>2010</u>
Total Sold Volume	\$45,402,416	\$ 36,501,244
Number of Sales	342	271
Median Sale Price	\$ 125,034	\$ 124,000

**DAYS ON THE MARKET (GRAND PRAIRIE)**



**GRAND PRAIRIE MKT SHARE BY PRICE RANGE**



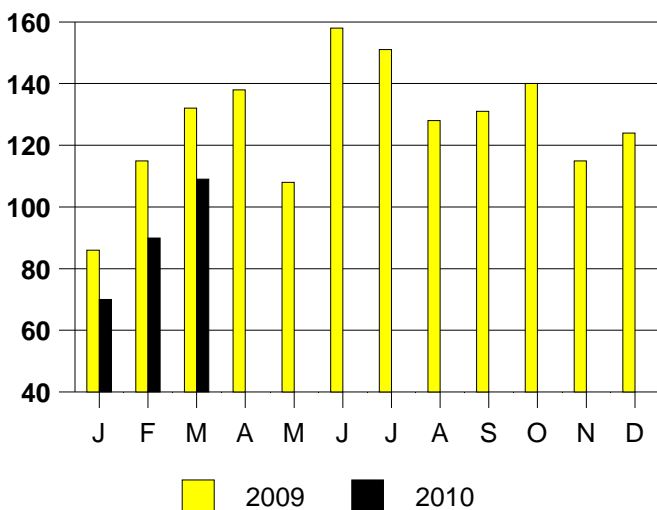
**SALE/LIST PRICE RATIO**

0K-100K	97.9%
101K-150K	99.1%
151K-200K	99.0%
201K-300K	96.0%
301K-500K	93.7%
501K-750K	NONE
751K+	NONE

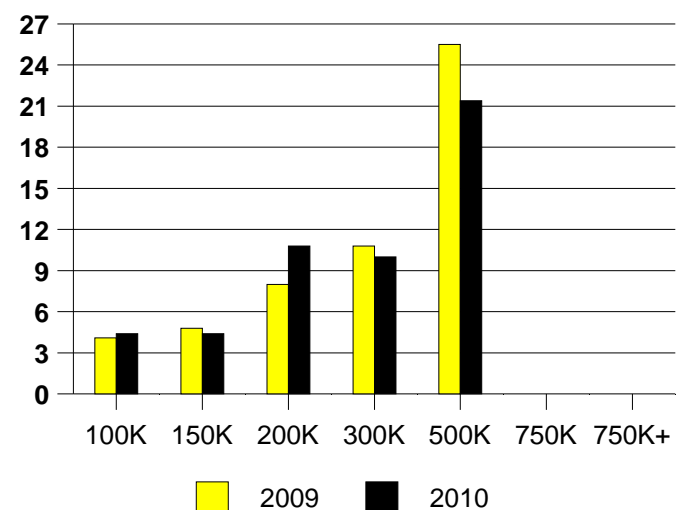
**AVERAGE OVERPRICING**  
Original List Price to Sale Price

2009	12.7%
2010	7.5%

**GRAND PRAIRIE MONTHLY SALES**



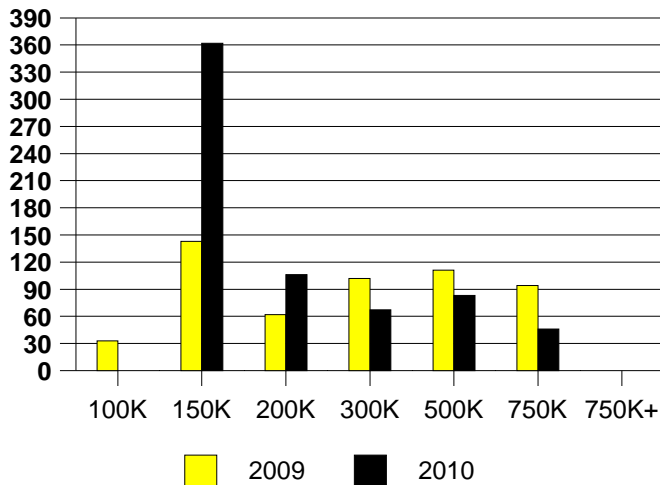
**GRAND PRAIRIE MONTHS OF INVENTORY**



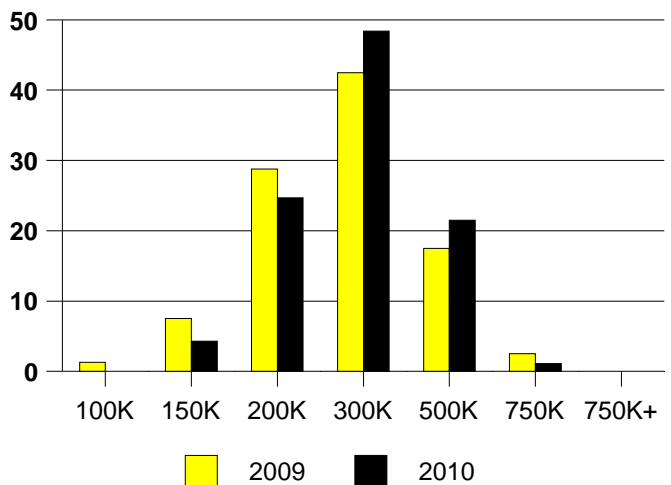
NTREIS Sold informaton as of 04/02/2010

	2009	2010
Total Sold Volume	\$ 19,112,836	\$ 24,076,842
Number of Sales	80	93
Median Sale Price	\$ 219,500	\$ 245,000

**DAYS ON THE MARKET (GRAPEVINE)**



**GRAPEVINE MKT SHARE BY PRICE RANGE**



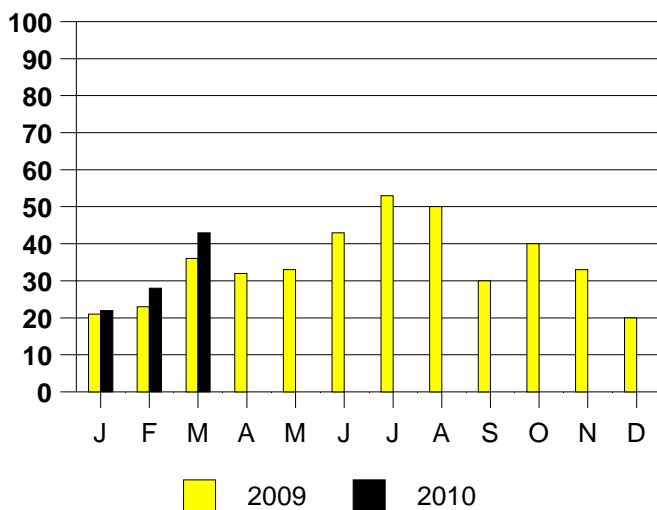
**SALE/LIST PRICE RATIO**

0K-100K	NONE
101K-150K	91.5%
151K-200K	97.0%
201K-300K	97.8%
301K-500K	95.4%
501K-750K	83.7%
751K+	NONE

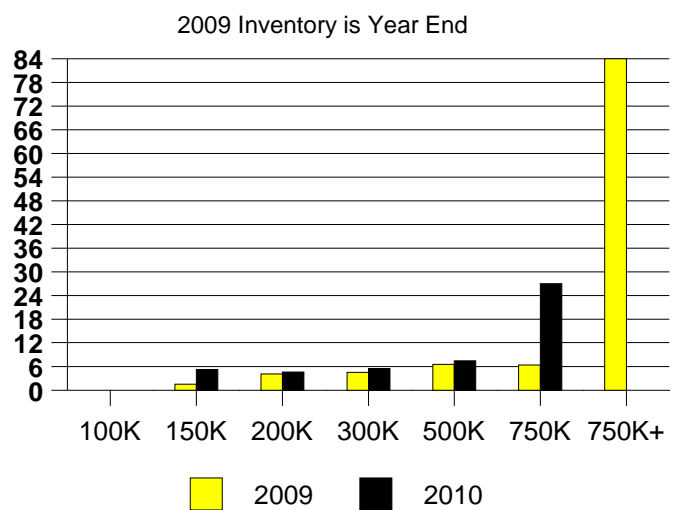
**AVERAGE OVERPRICING**  
Original List Price to Sale Price

2009	6.4%
2010	11.3%

**GRAPEVINE MONTHLY SALES**



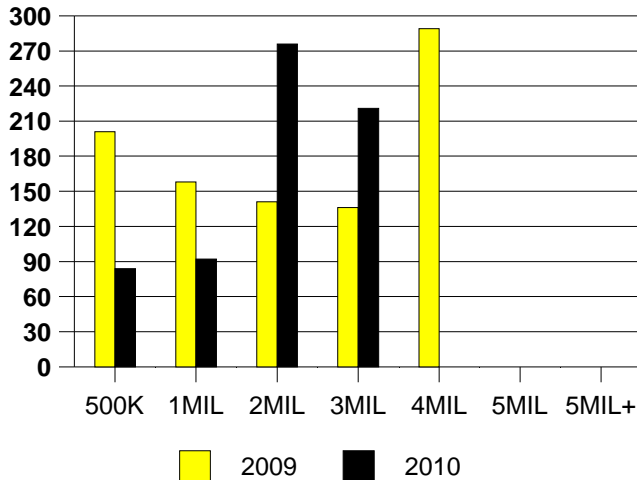
**GRAPEVINE MONTHS OF INVENTORY**  
Inventory not shown where no sales  
2009 Inventory is Year End



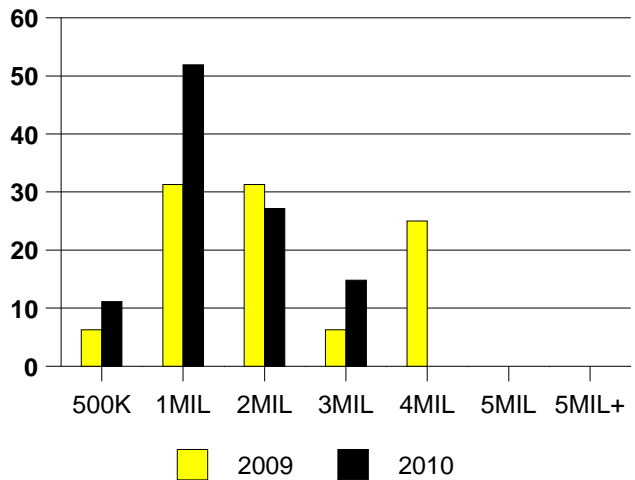
NTREIS Sold informaton as of 04/02/2010

	<u>2009</u>	<u>2010</u>
Total Sold Volume	\$ 28,814,824	\$ 30,563,300
Number of Sales	16	27
Median Sale Price	\$ 1,225,000	\$ 925,000

**DAYS ON THE MARKET (HP)**



**MKT SHARE BY PRICE RANGE (HP)**



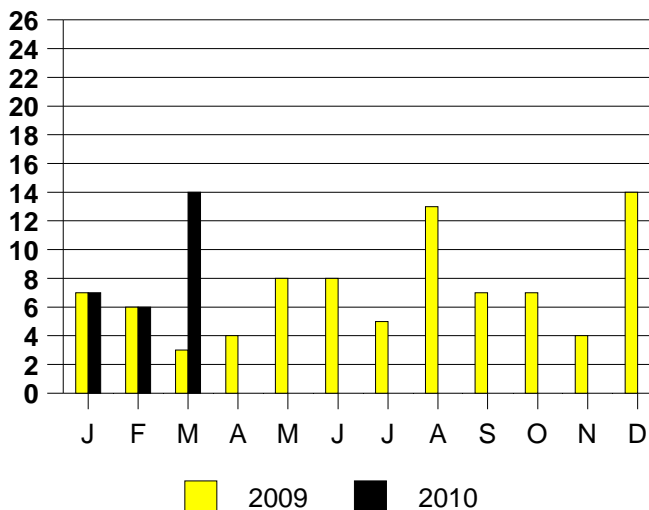
**SALE/LIST PRICE RATIO**

0K-500K	92.6%
501K-1MIL	96.1%
1MIL-2MIL	89.3%
2MIL-3MIL	93.4%
3MIL-4MIL	NONE
4MIL-5MIL	NONE
5MIL+	NONE

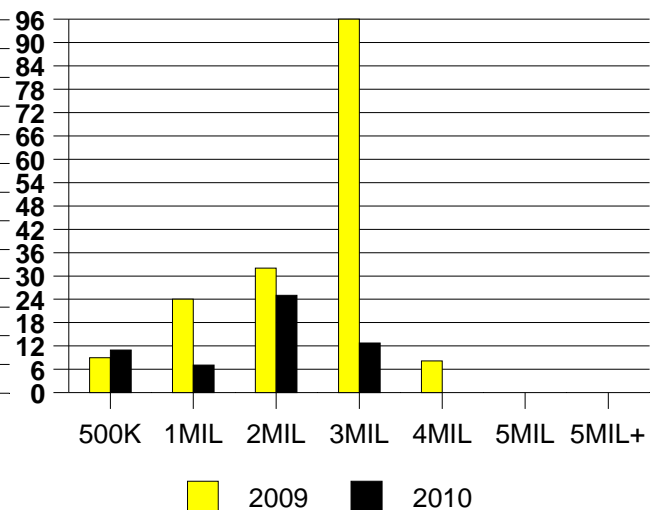
**AVERAGE OVERPRICING**

Orig List Price to Sale Price	
2009	12.9%
2010	13.6%

**HIGHLAND PARK MONTHLY SALES**



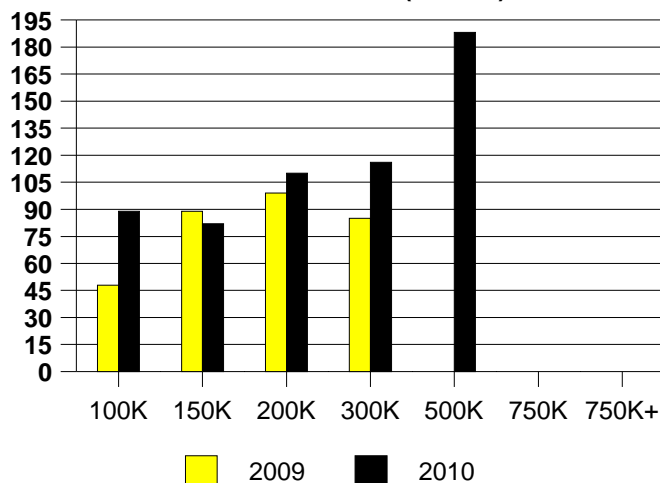
**MONTHS OF INVENTORY (HIGHLAND PARK)**  
Inventory not shown where no sales



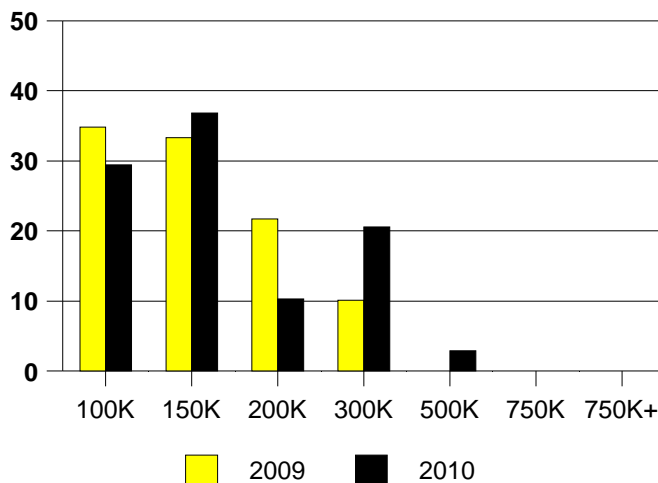
NTREIS Sold information as of 04/02/2010

	<u>2009</u>	<u>2010</u>
Total Sold Volume	\$ 8,987,933	\$ 9,794,419
Number of Sales	69	68
Median Sale Price	\$ 128,000	\$ 131,000

**DAYS ON THE MARKET (HURST)**



**HURST MKT SHARE BY PRICE RANGE**



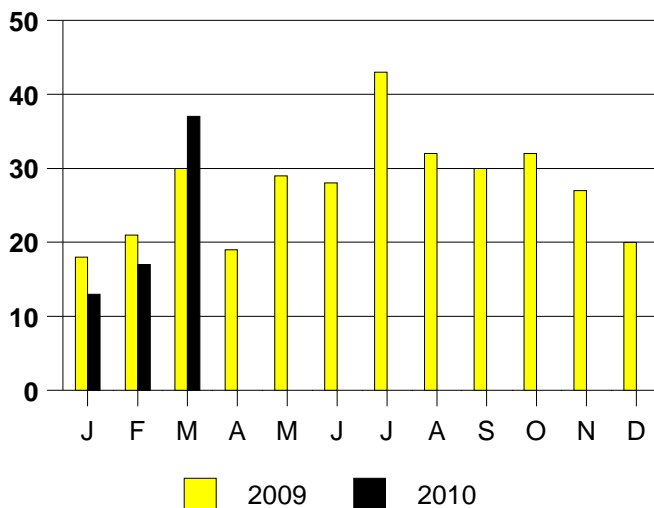
**SALE/LIST PRICE RATIO**

0K-100K	95.0%
101K-150K	98.2%
151K-200K	98.5%
201K-300K	97.7%
301K-500K	97.5%
501K-750K	NONE
751K+	NONE

**AVERAGE OVERPRICING**  
Original List Price to Sale Price

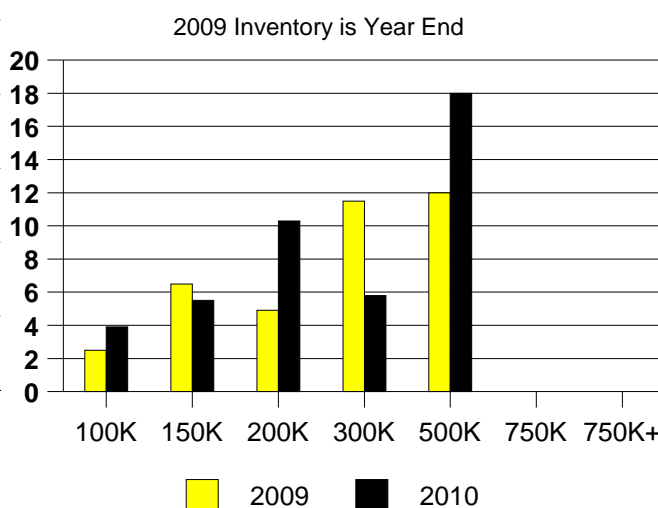
2009	7.1%
2010	9.4%

**HURST MONTHLY SALES**



Inventory not shown where no sales

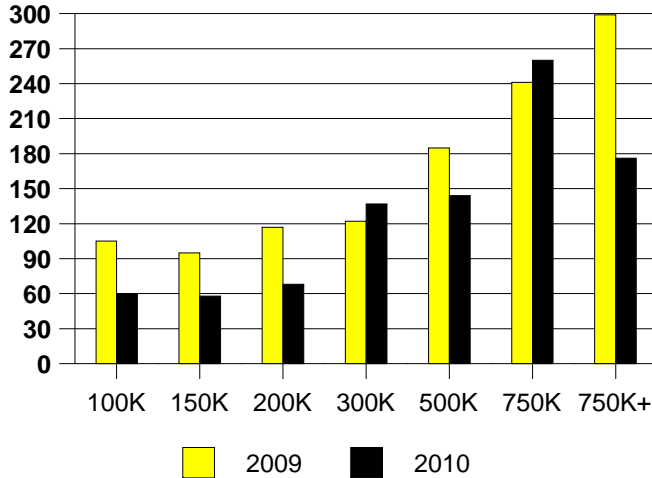
**HURST MONTHS OF INVENTORY**



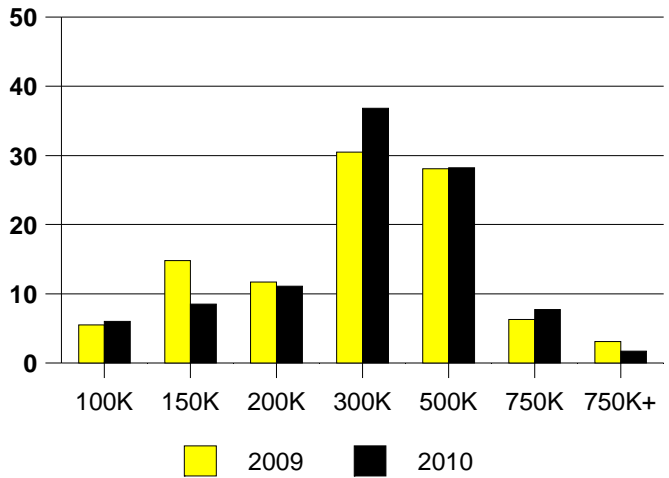
NTREIS Sold informaton as of 04/02/2010

	<u>2009</u>	<u>2010</u>
Total Sold Volume	\$ 37,607,608	\$ 34,503,128
Number of Sales	128	117
Median Sale Price	\$ 259,000	\$ 265,000

**DAYS ON THE MARKET (KELLER)**



**KELLER MKT SHARE BY PRICE RANGE**



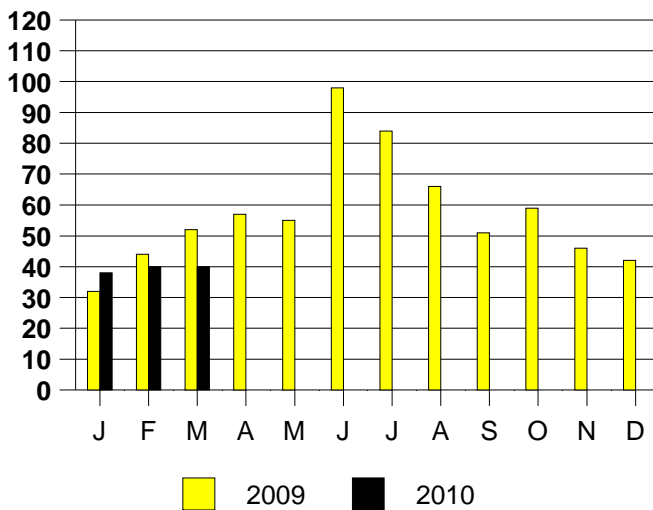
**SALE/LIST PRICE RATIO**

0K-100K	92.5%
101K-150K	98.6%
151K-200K	99.2%
201K-300K	97.0%
301K-500K	96.9%
501K-750K	96.3%
751K+	97.2%

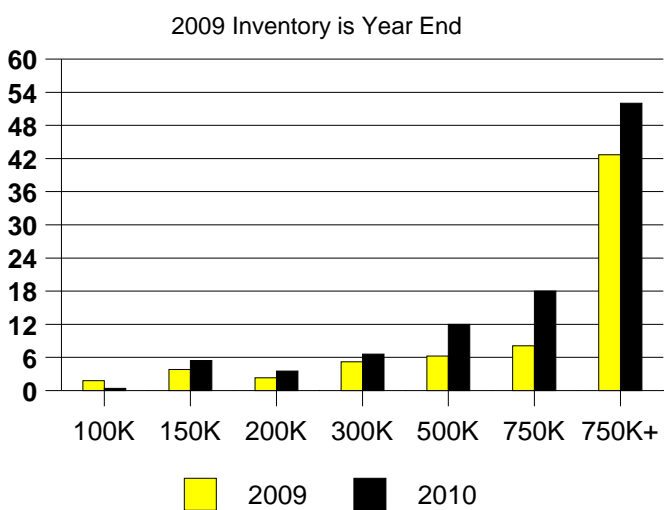
**AVERAGE OVERPRICING**  
Original List Price to Sale Price

2009	8.6%
2010	7.2%

**KELLER MONTHLY SALES**



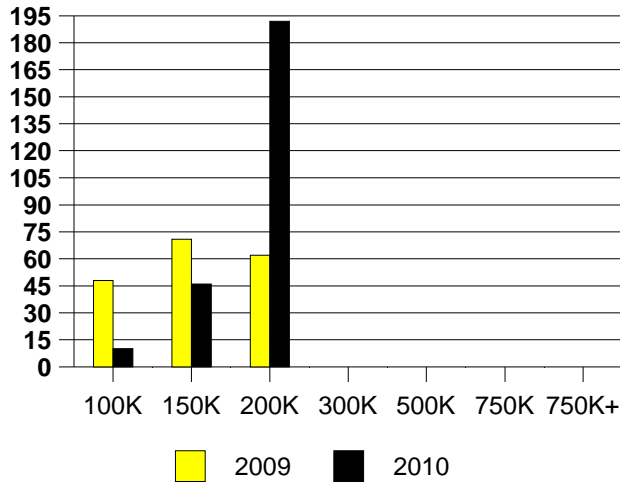
Inventory not shown where no sales  
**KELLER MONTHS OF INVENTORY**



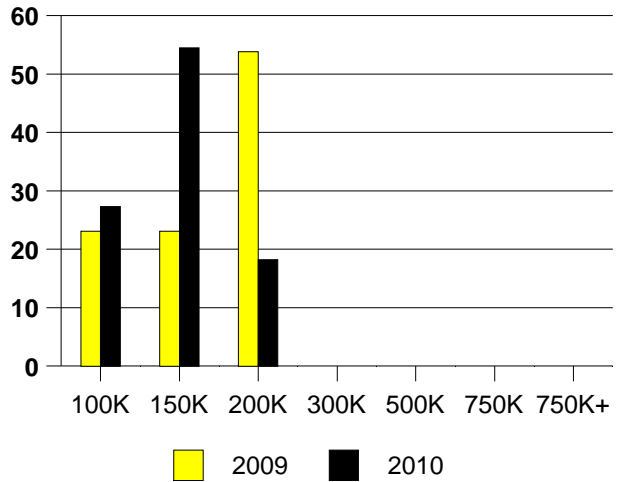
NTREIS Sold informaton as of 04/02/2010

	<u>2009</u>	<u>2010</u>
Total Sold Volume	\$ 1,740,541	\$ 1,314,200
Number of Sales	13	11
Median Sale Price	\$ 155,850	\$ 134,000

**LAKE DALLAS DAYS ON THE MARKET**



**LAKE DALLAS MKT SHARE BY PRICE RANGE**



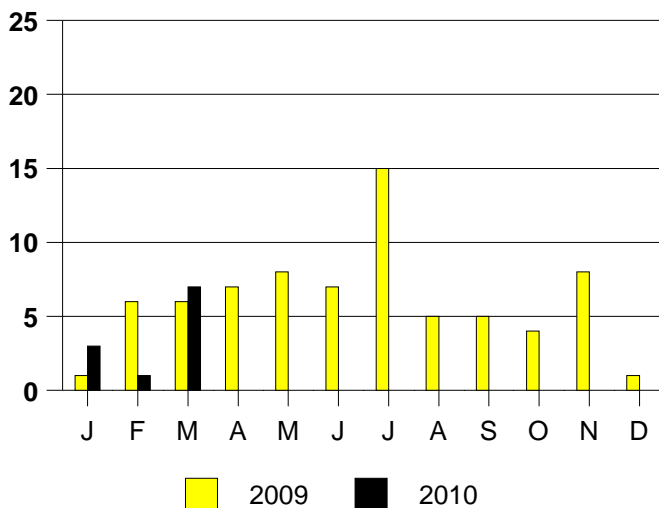
**SALE/LIST PRICE RATIO**

0K-100K	96.8%
101K-150K	98.5%
151K-200K	97.9%
201K-300K	NONE
301K-500K	NONE
501K-750K	NONE
751K+	NONE

**AVERAGE OVERPRICING**  
Original List Price to Sale Price

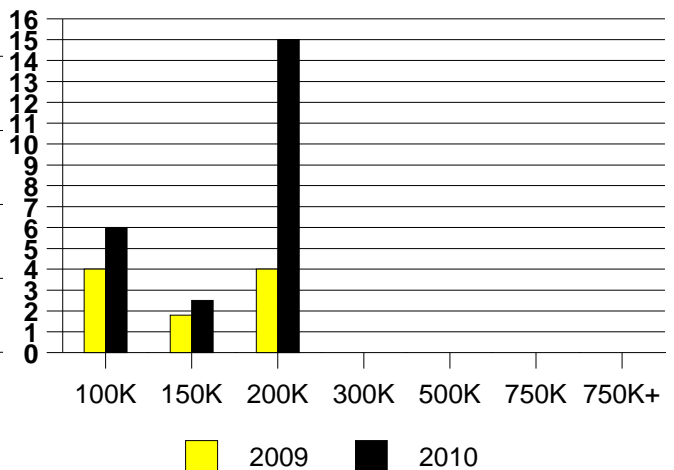
2009	5.6%
2010	4.1%

**LAKE DALLAS MONTHLY SALES**



**LAKE DALLAS MONTHS OF INVENTORY**

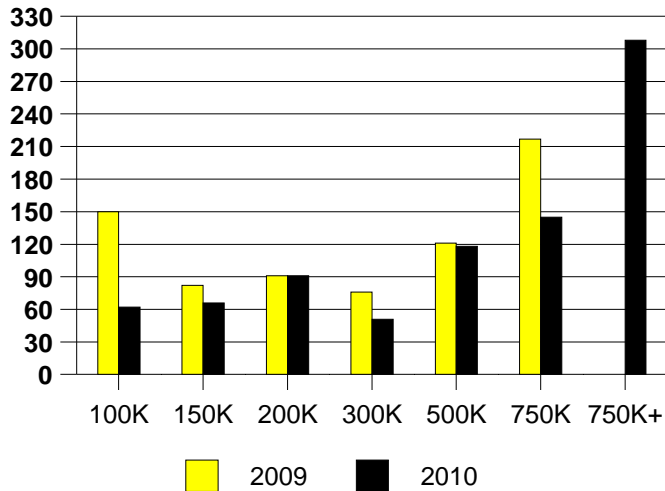
2009 Inventory is Year End



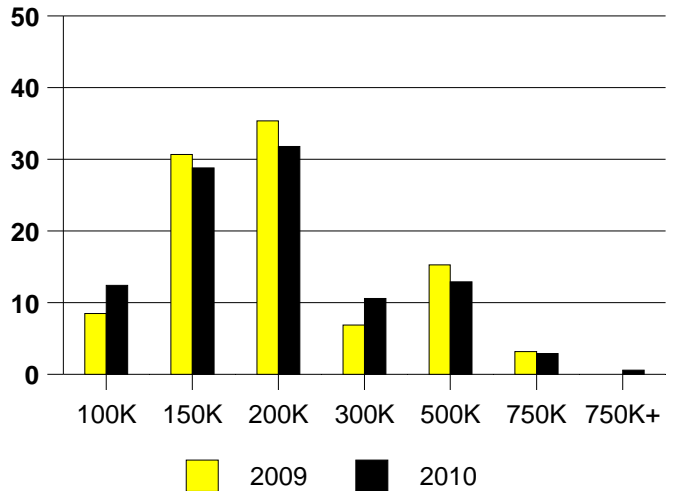
NTREIS Sold informaton as of 04/02/2010

	2009	2010
Total Sold Volume	\$ 37,916,496	\$ 34,528,884
Number of Sales	189	170
Median Sale Price	\$ 164,500	\$ 162,700

**DAYS ON THE MARKET (LEWISVILLE)**



**LEWISVILLE MKT SHARE BY PRICE RANGE**



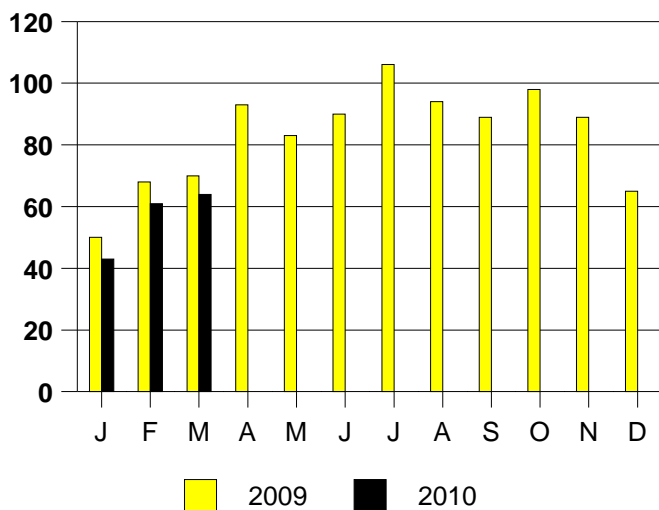
**SALE/LIST PRICE RATIO**

0K-100K	96.2%
101K-150K	97.8%
151K-200K	97.8%
201K-300K	97.8%
301K-500K	95.0%
501K-750K	96.1%
751K+	100.0%

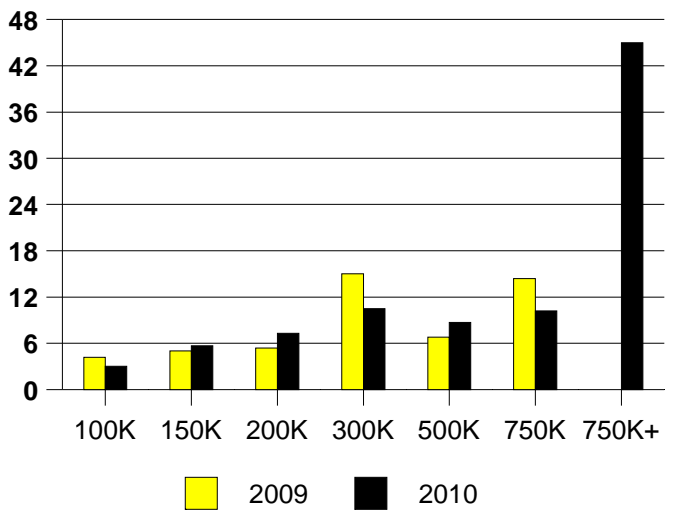
**AVERAGE OVERPRICING**  
Original List Price to Sale Price

2009	7.4%
2010	6.5%

**LEWISVILLE MONTHLY SALES**



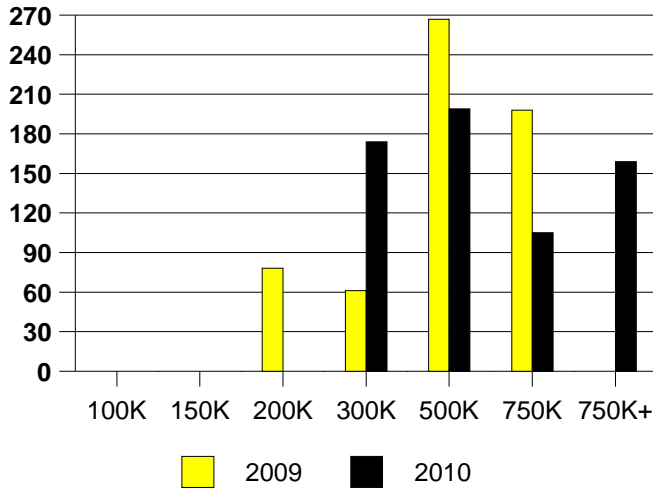
Inventory not shown where no sales  
**LEWISVILLE MONTHS OF INVENTORY**



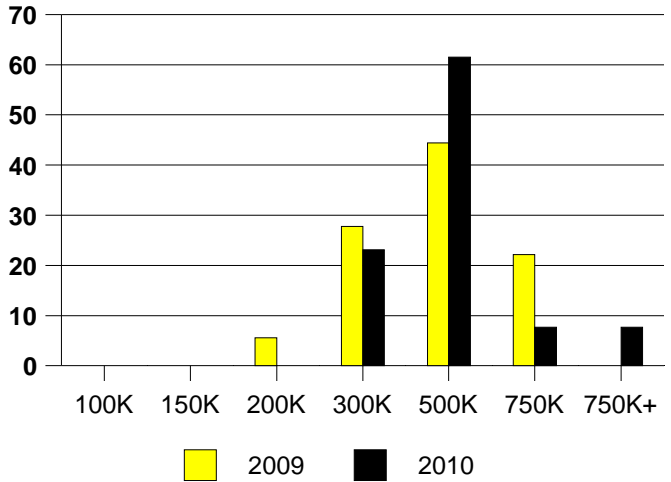
NTREIS Sold informaton as of 04/02/2010

	2009	2010
Total Sold Volume	\$ 7,232,900	\$ 5,477,390
Number of Sales	18	13
Median Sale Price	\$ 425,000	\$ 405,000

DAYS ON THE MARKET (LUCAS)



LUCAS MKT SHARE BY PRICE RANGE



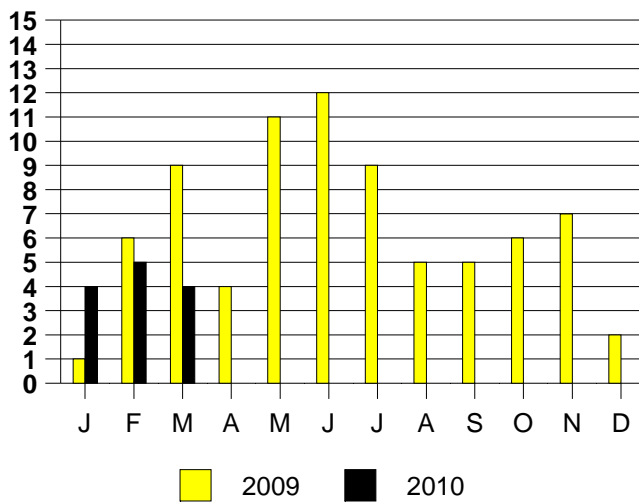
SALE/LIST PRICE RATIO

0K-100K	NONE
101K-150K	NONE
151K-200K	NONE
201K-300K	95.0%
301K-500K	96.7%
501K-750K	100.0%
751K+	95.6%

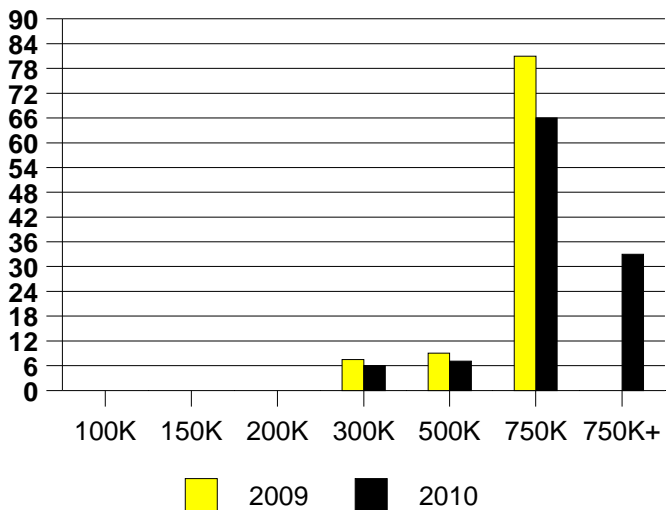
AVERAGE OVERPRICING  
Original List Price to Sale Price

2009	100%
2010	9.8%

LUCAS MONTHLY SALES

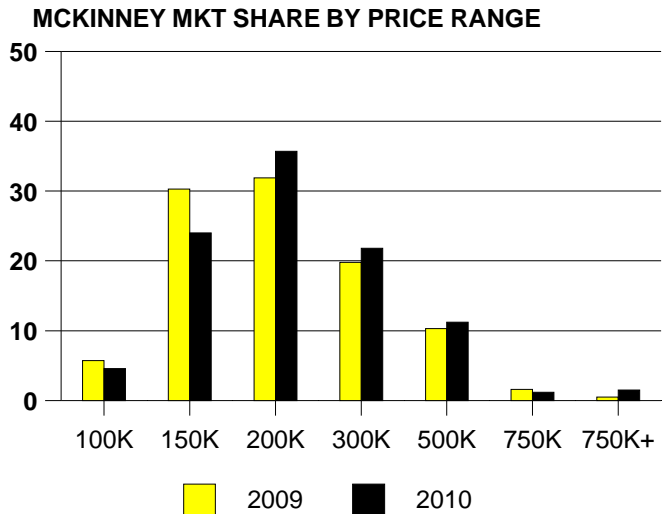
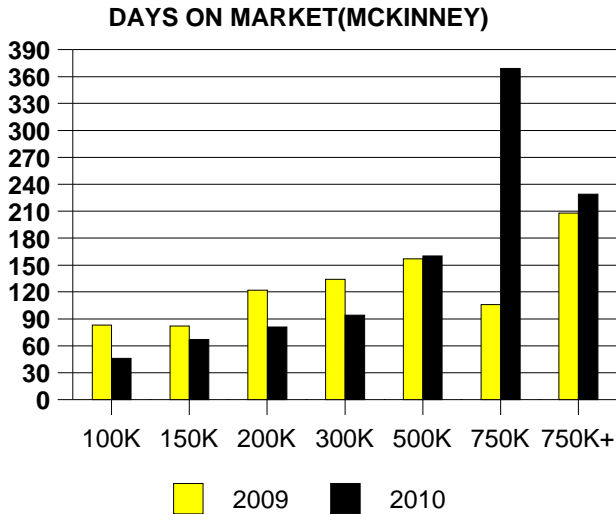


Inventory not shown where no sales  
LUCAS MONTHS OF INVENTORY



NTREIS Sold informaton as of 04/02/2010

	<u>2009</u>	<u>2010</u>
Total Sold Volume	\$ 86,709,352	\$ 89,044,624
Number of Sales	439	412
Median Sale Price	\$ 164,990	\$ 174,550



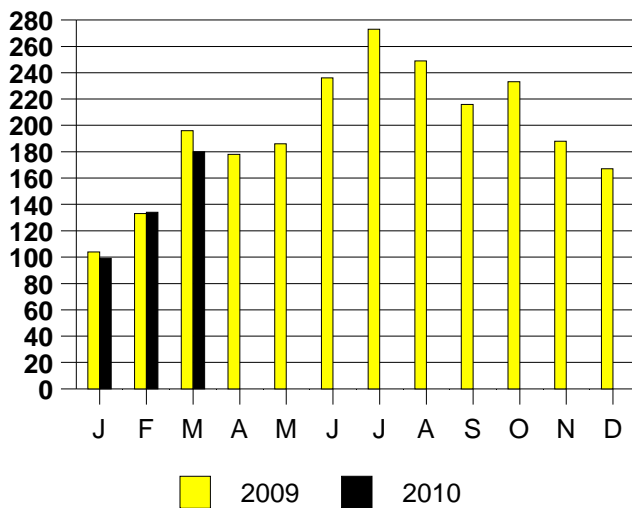
**SALE/LIST PRICE RATIO**

0K-100K	94.3%
101K-150K	98.4%
151K-200K	98.0%
201K-300K	97.0%
301K-500K	96.0%
501K-750K	96.9%
751K+	94.3%

**AVERAGE OVERPRICING**  
Original List Price to Sale Price

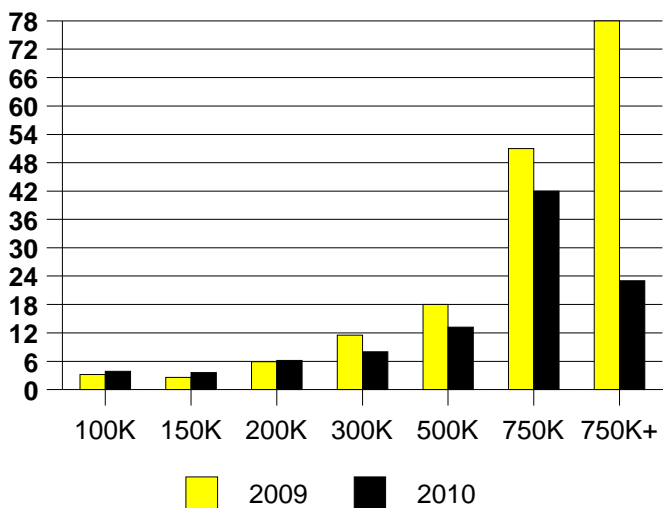
2009	8.8%
2010	6.7%

**MCKINNEY MONTHLY SALES**



Inventory not shown where no sales

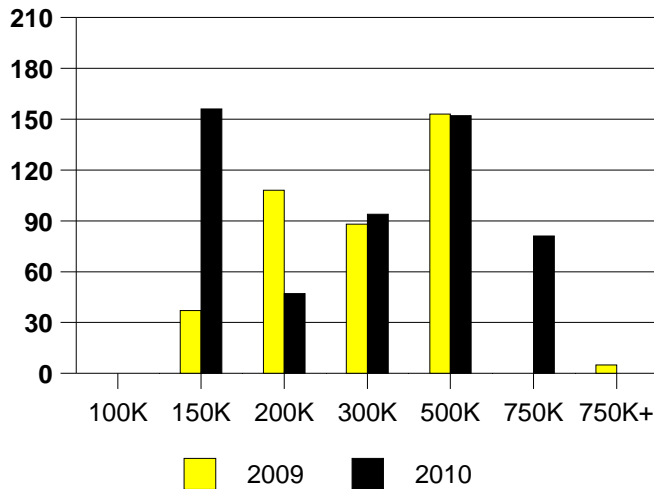
**MCKINNEY MONTHS OF INVENTORY**



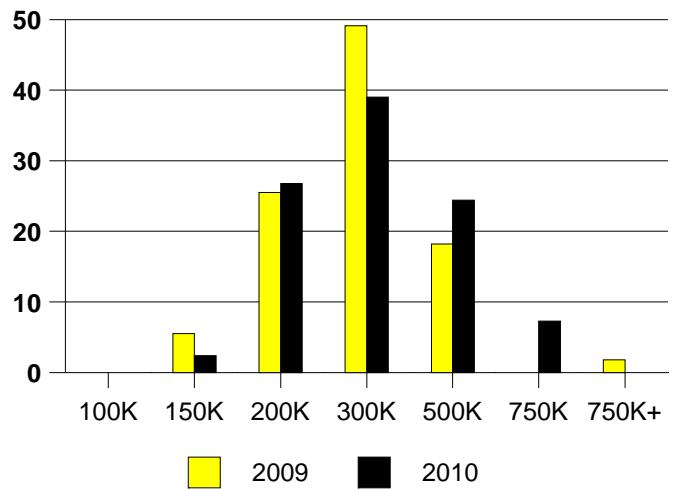
NTREIS Sold informaton as of 04/02/2010

	<u>2009</u>	<u>2010</u>
Total Sold Volume	\$13,878,442	\$ 11,538,252
Number of Sales	55	41
Median Sale Price	\$ 235,000	\$ 270,000

**DAYS ON THE MARKET (MURPHY)**



**MURPHY MKT SHARE BY PRICE RANGE**



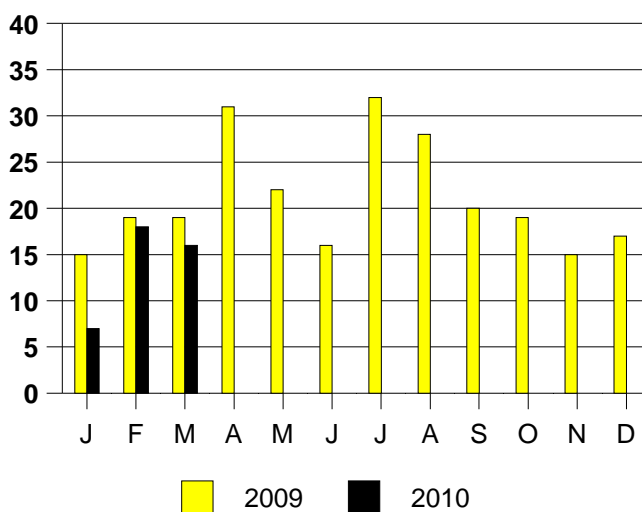
**SALE/LIST PRICE RATIO**

0K-100K	NONE
101K-150K	115.1%
151K-200K	95.8%
201K-300K	95.4%
301K-500K	94.9%
501K-750K	98.2%
751K+	NONE

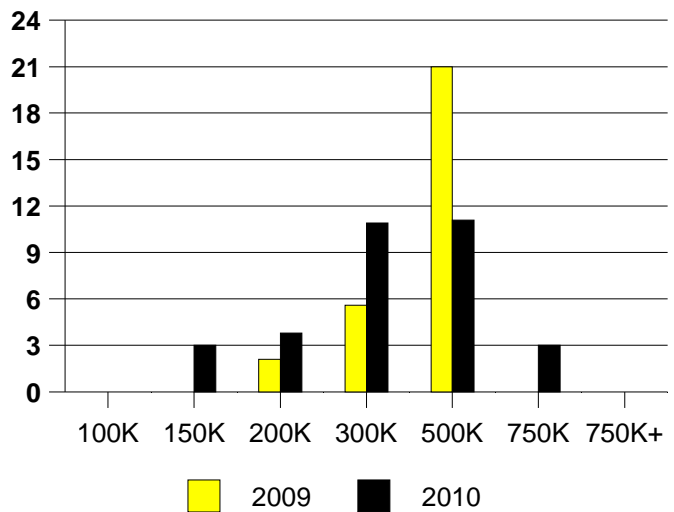
**AVERAGE OVERPRICING**  
Original List Price to Sale Price

2009	10.1%
2010	7.7%

**MURPHY MONTHLY SALES**



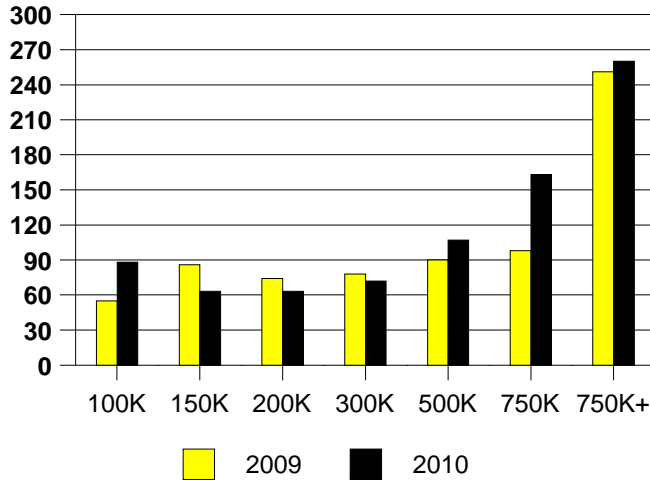
Inventory not shown where no sales  
**MURPHY MONTHS OF INVENTORY**



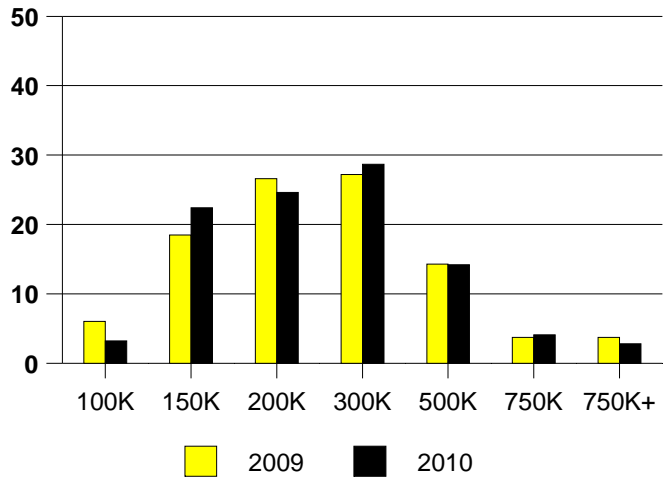
NTREIS Sold informaton as of 04/02/2010

	<u>2009</u>	<u>2010</u>
Total Sold Volume	\$ 131,659,792	\$ 119,535,968
Number of Sales	518	464
Median Sale Price	\$ 197,875	\$ 200,000

**DAYS ON MARKET(PLANO)**



**PLANO MKT SHARE BY PRICE RANGE**



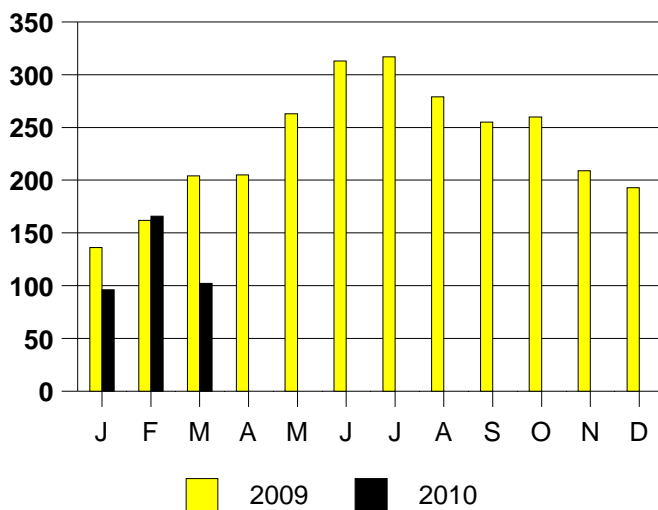
**SALE/LIST PRICE RATIO**

0K-100K	93.2%
101K-150K	98.4%
151K-200K	98.3%
201K-300K	96.9%
301K-500K	96.6%
501K-750K	95.1%
751K+	95.3%

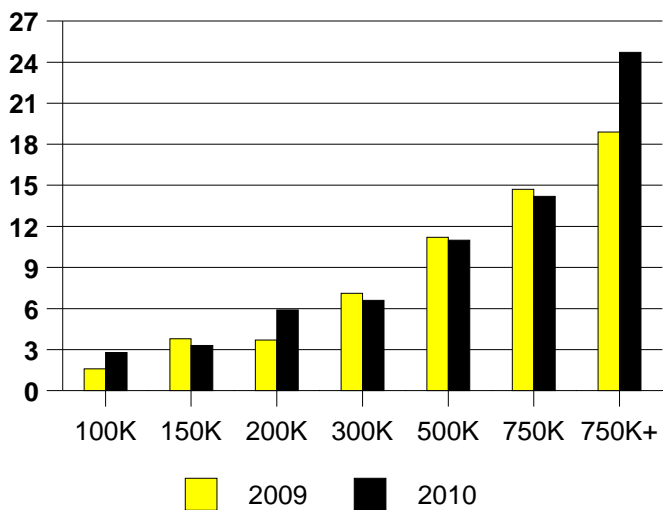
**AVERAGE OVERPRICING**  
Original List Price to Sale Price

2009	7.3%
2010	5.9%

**PLANO MONTHLY SALES**



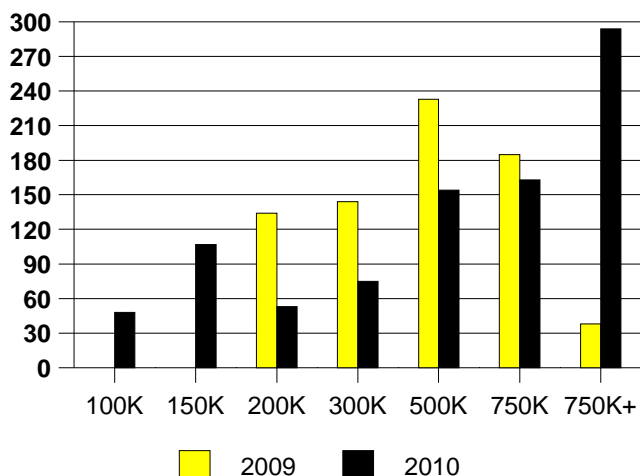
Inventory not shown where no sales  
**PLANO MONTHS OF INVENTORY**



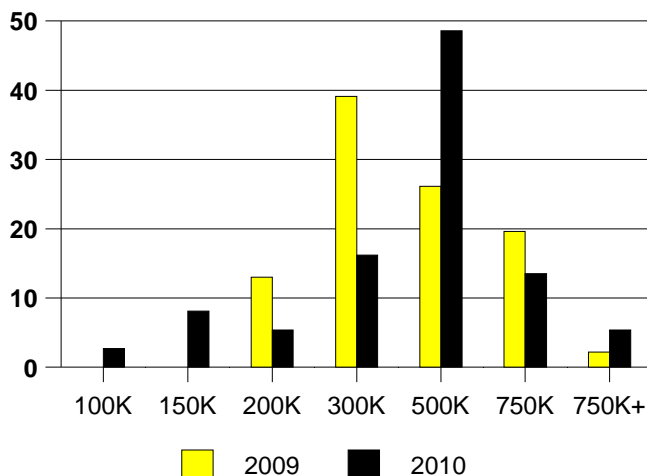
NTREIS Sold informaton as of 04/02/2010

	2009	2010
Total Sold Volume	\$ 16,429,234	\$ 14,868,364
Number of Sales	46	37
Median Sale Price	\$ 292,450	\$ 373,500

PROSPER DAYS ON THE MARKET



PROSPER MARKET SHARE BY PRICE RANGE



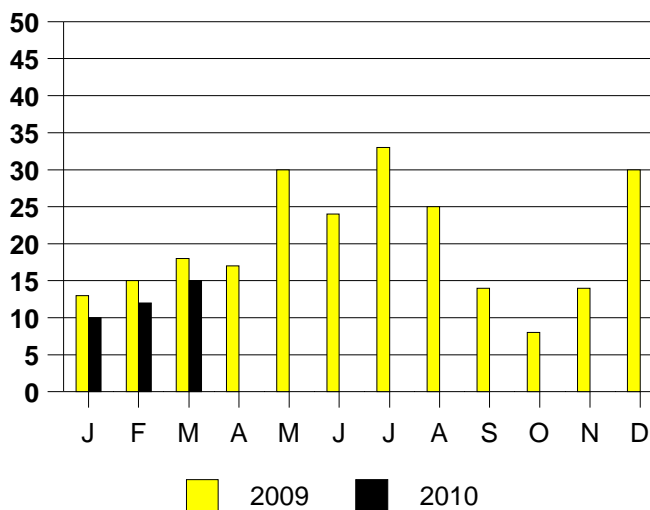
SALE/LIST PRICE RATIO

0K-100K	89.2%
101K-150K	100.1%
151K-200K	100.5%
201K-300K	98.4%
301K-500K	97.5%
501K-750K	97.1%
751K+	101.1%

AVERAGE OVERPRICING  
Original List Price to Sale Price

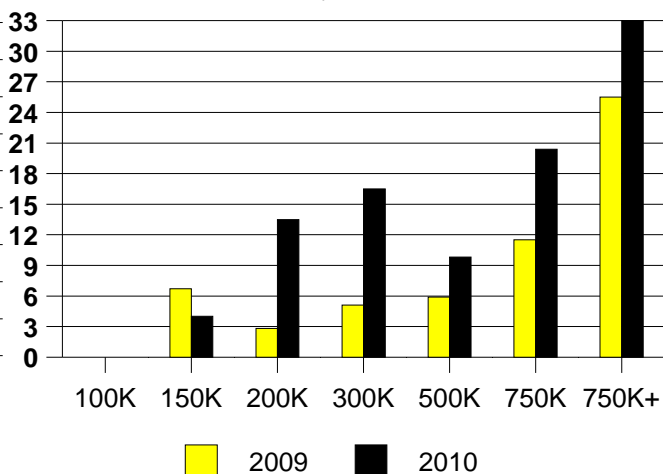
2009	11.0%
2010	7.9%

PROSPER MONTHLY SALES



Inventory not shown where no sales  
PROSPER MONTHS OF INVENTORY

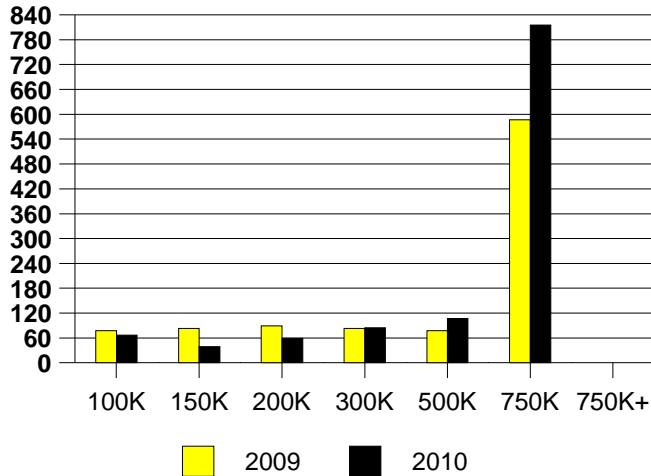
2009 Inventory is Year End



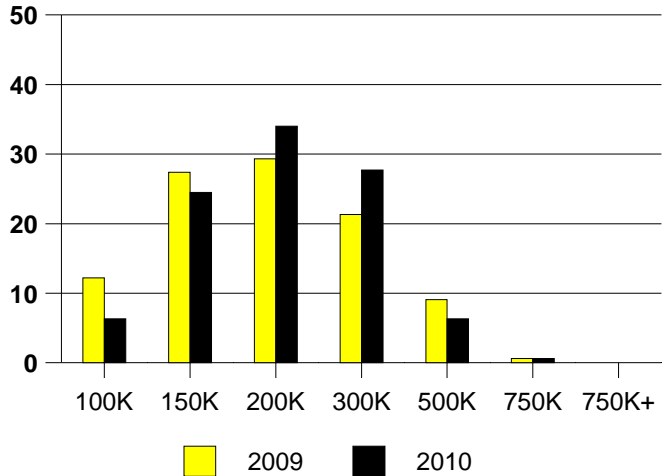
NTREIS Sold informaton as of 04/02/2010

	<u>2009</u>	<u>2010</u>
Total Sold Volume	\$ 30,300,114	\$ 29,996,796
Number of Sales	164	159
Median Sale Price	\$ 165,825	\$ 173,000

**DAYS ON MARKET(RICHARDSON)**



**RICHARDSON MKT SHARE BY PRICE RANGE**



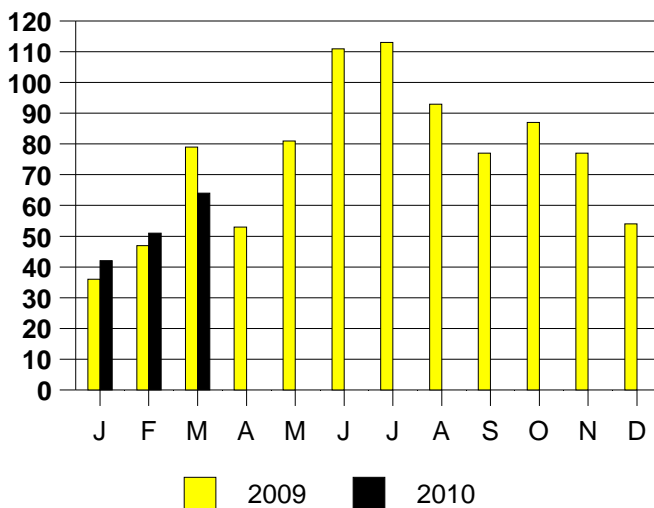
**SALE/LIST PRICE RATIO**

0K-100K	93.7%
101K-150K	97.7%
151K-200K	95.9%
201K-300K	97.2%
301K-500K	94.8%
501K-750K	103.6%
751K+	NONE

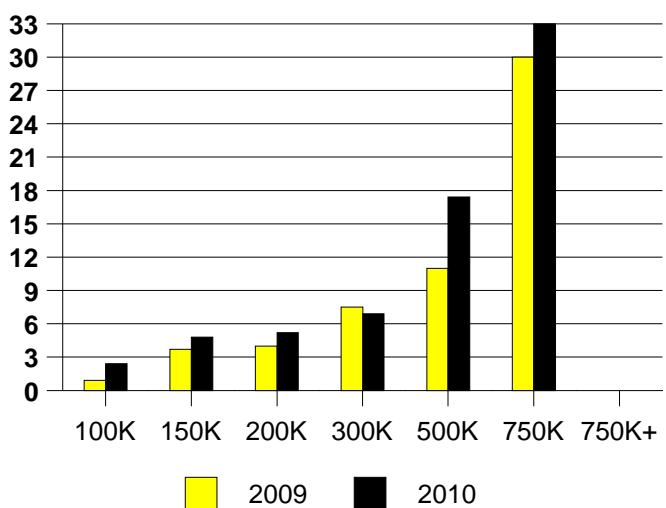
**AVERAGE OVERPRICING**  
Original List Price to Sale Price

2009	8.3%
2010	7.1%

**RICHARDSON MONTHLY SALES**



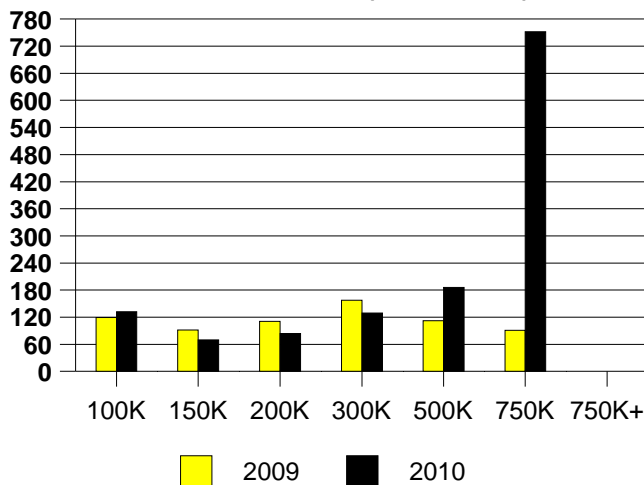
**RICHARDSON MONTHS OF INVENTORY**



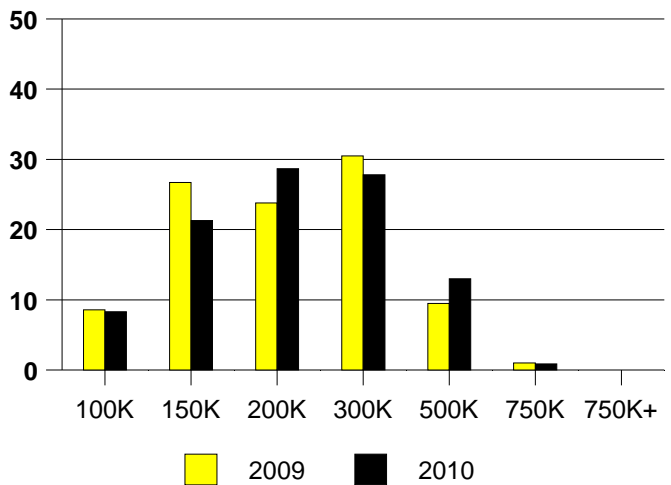
NTREIS Sold informaton as of 04/02/2010

	<u>2009</u>	<u>2010</u>
Total Sold Volume	\$ 20,634,118	\$ 21,996,734
Number of Sales	105	108
Median Sale Price	\$ 180,000	\$ 180,250

**DAYS ON THE MARKET (ROCKWALL)**



**ROCKWALL MKT SHARE BY PRICE RANGE**



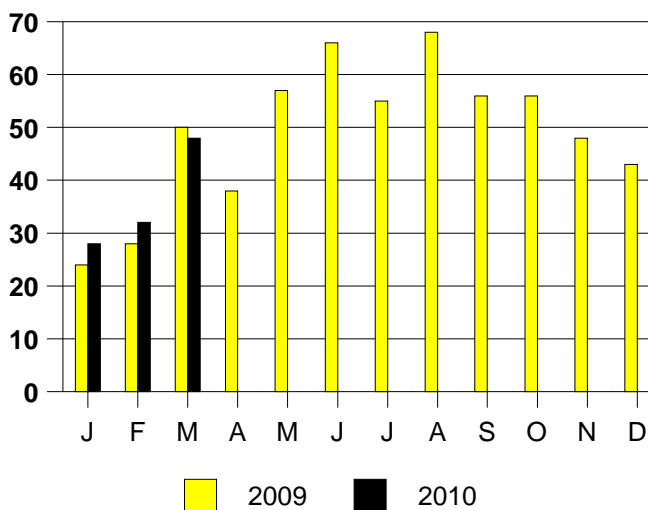
**SALE/LIST PRICE RATIO**

0K-100K	81.8%
101K-150K	94.6%
151K-200K	97.1%
201K-300K	95.9%
301K-500K	96.7%
501K-750K	91.5%
751K+	NONE

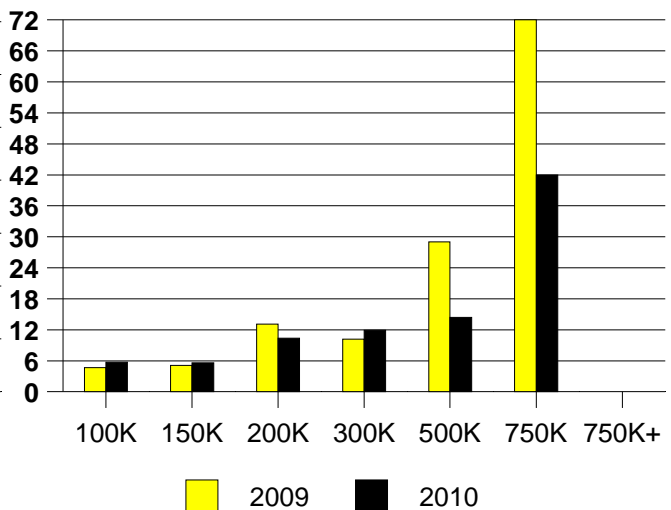
**AVERAGE OVERPRICING**  
Original List Price to Sale Price

2009	10.6%
2010	10.6%

**ROCKWALL MONTHLY SALES**



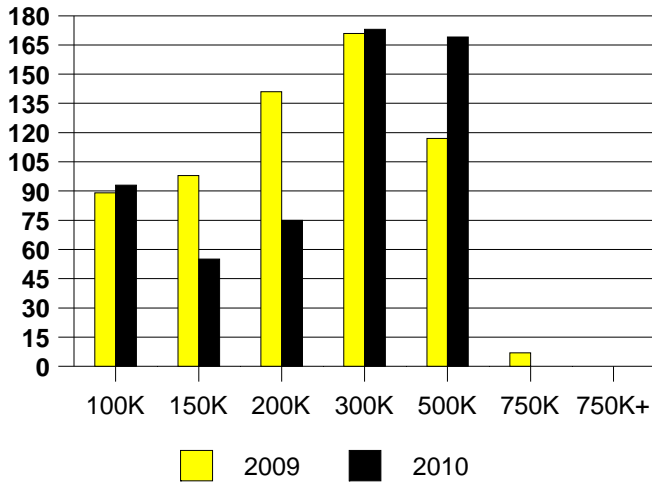
Inventory not shown where no sales  
**ROCKWALL MONTHS OF INVENTORY**



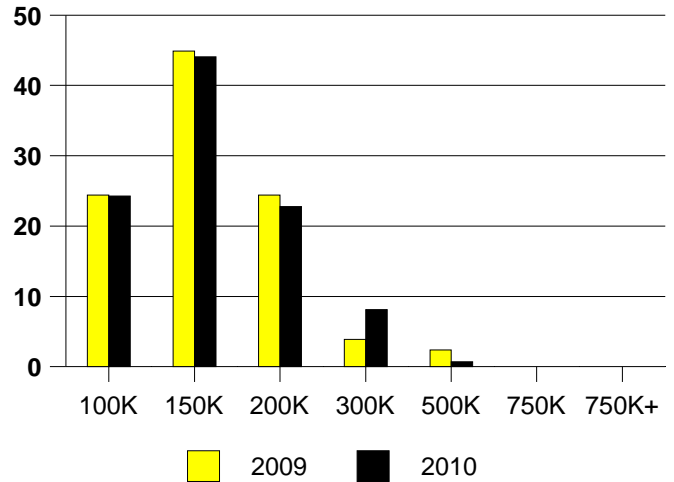
NTREIS Sold informaton as of 04/02/2010

	<u>2009</u>	<u>2010</u>
Total Sold Volume	\$ 16,981,756	\$ 18,844,728
Number of Sales	127	136
Median Sale Price	\$ 131,558	\$ 131,750

**DAYS ON THE MARKET (ROWLETT)**



**ROWLETT MKT SHARE BY PRICE RANGE**



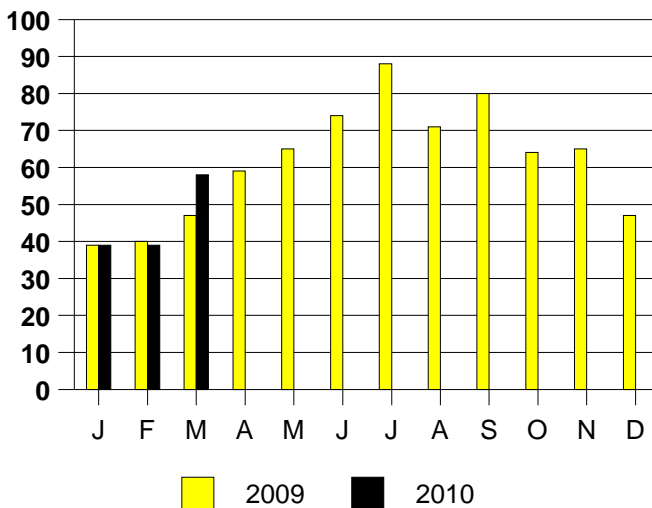
**SALE/LIST PRICE RATIO**

0K-100K	97.9%
101K-150K	98.5%
151K-200K	97.6%
201K-300K	97.1%
301K-500K	92.2%
501K-750K	NONE
751K+	NONE

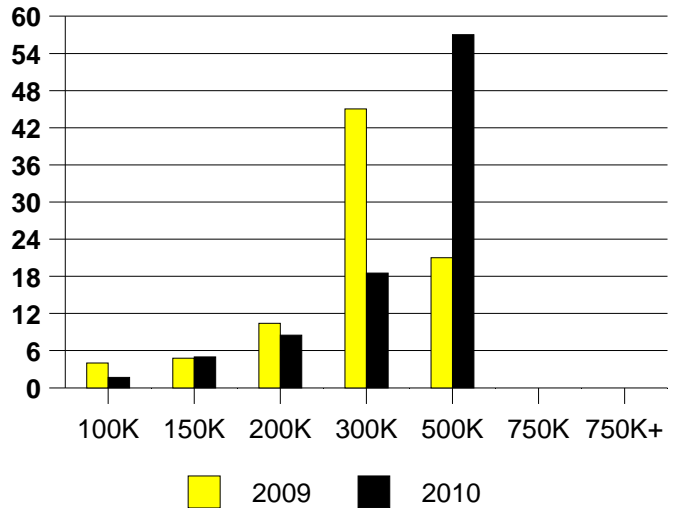
**AVERAGE OVERPRICING**  
Original List Price to Sale Price

2009	11.1%
2010	6.6%

**ROWLETT MONTHLY SALES**



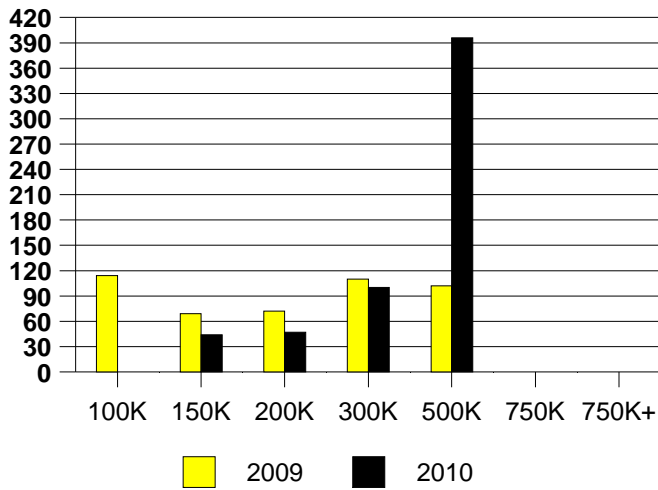
Inventory not shown where no sales  
**ROWLETT MONTHS OF INVENTORY**



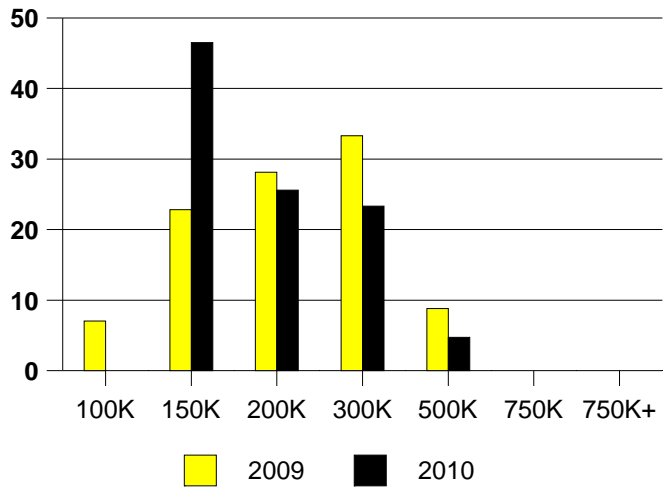
NTREIS Sold informaton as of 04/02/2010

	2009	2010
Total Sold Volume	\$ 11,024,871	\$ 7,669,912
Number of Sales	57	43
Median Sale Price	\$ 180,500	\$ 157,000

DAYS ON THE MARKET (SACHSE)



SACHSE MKT SHARE BY PRICE RANGE



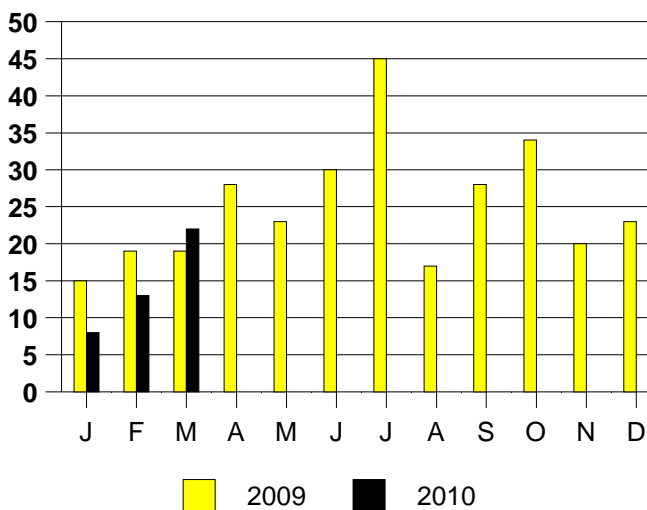
SALE/LIST PRICE RATIO

0K-100K	NONE
101K-150K	98.2%
151K-200K	97.7%
201K-300K	94.3%
301K-500K	97.6%
501K-750K	NONE
751K+	NONE

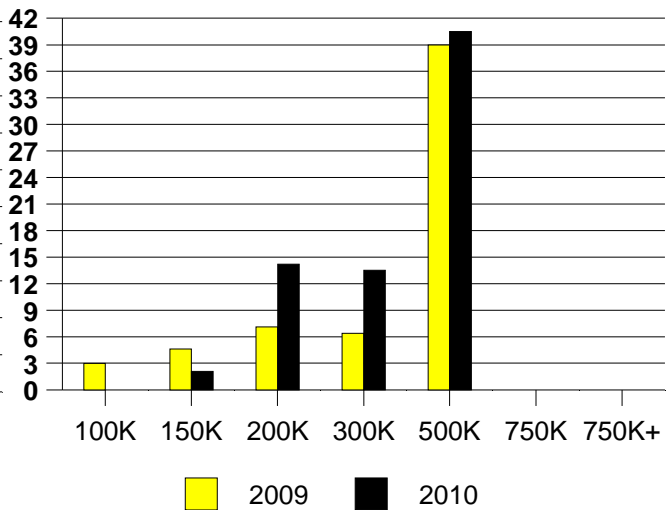
AVERAGE OVERPRICING  
Original List Price to Sale Price

2009	10.8%
2010	5.9%

SACHSE MONTHLY SALES



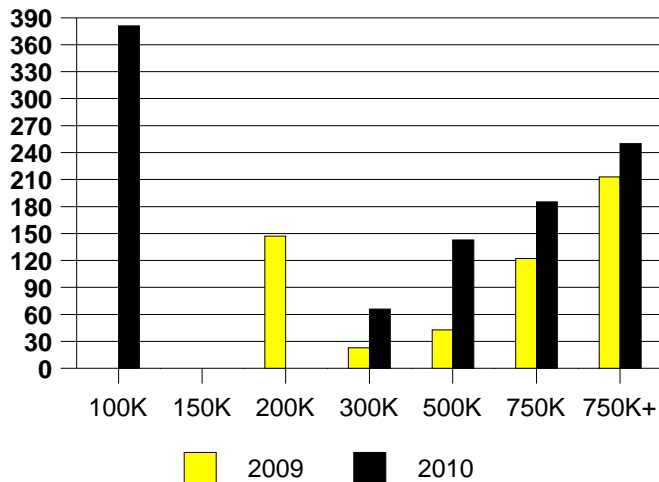
Inventory not shown where no sales  
SACHSE MONTHS OF INVENTORY



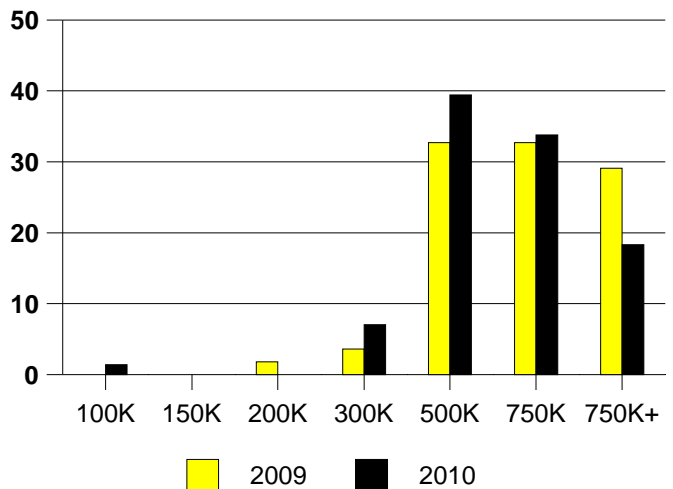
NTREIS Sold informaton as of 04/02/2010

	2009	2010
Total Sold Volume	\$ 40,395,152	\$ 41,491,728
Number of Sales	55	71
Median Sale Price	\$ 625,000	\$ 520,000

**DAYS ON THE MARKET (SOUTHLAKE)**



**SOUTHLAKE MKT SHARE BY PRICE RANGE**



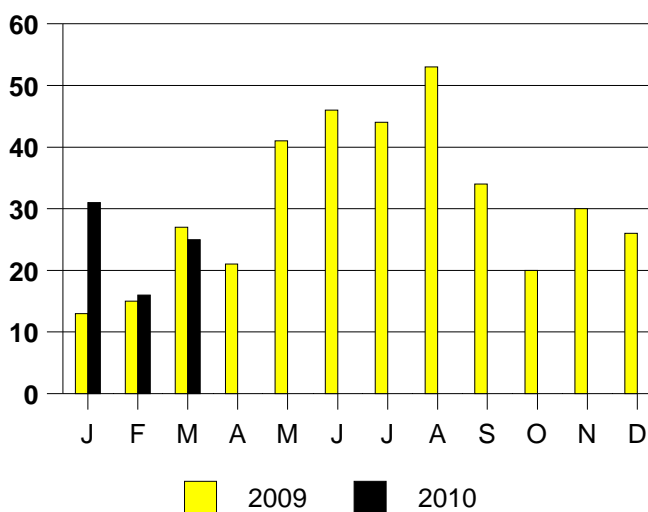
**SALE/LIST PRICE RATIO**

0K-100K	71.5%
101K-150K	NONE
151K-200K	NONE
201K-300K	98.2%
301K-500K	96.2%
501K-750K	96.5%
751K+	97.9%

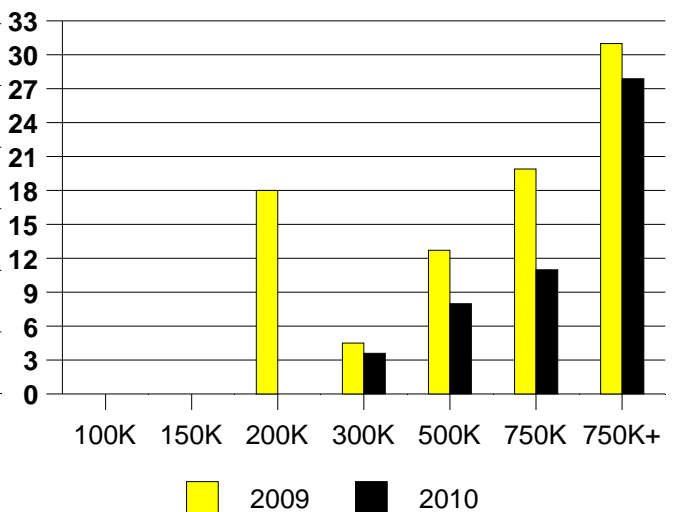
**AVERAGE OVERPRICING**  
Original List Price to Sale Price

2009	5.2%
2010	8.0%

**SOUTHLAKE MONTHLY SALES**



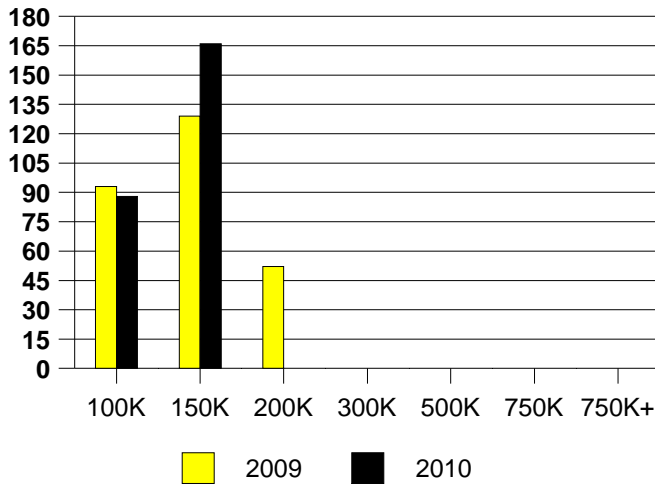
Inventory not shown where no sales  
**SOUTHLAKE MONTHS OF INVENTORY**



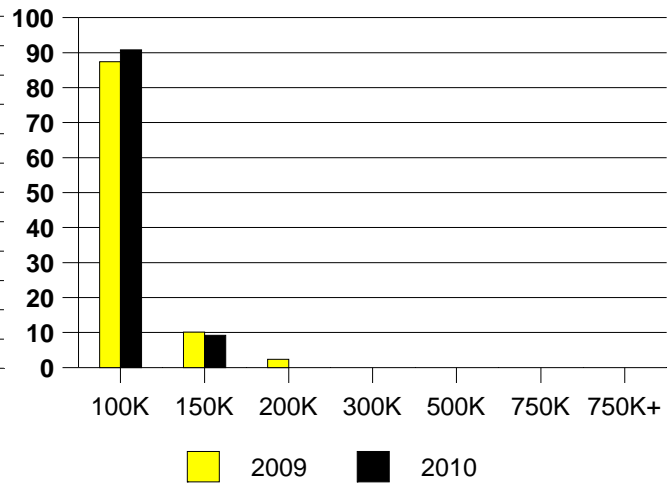
NTREIS Sold informaton as of 04/02/2010

	<u>2009</u>	<u>2010</u>
Total Sold Volume	\$7,672,090	\$ 5,973,112
Number of Sales	127	98
Median Sale Price	\$ 53,500	\$ 58,000

**DAYS ON THE MARKET (OAK CLIFF)**



**OAK CLIFF MKT SHARE BY PRICE RANGE**



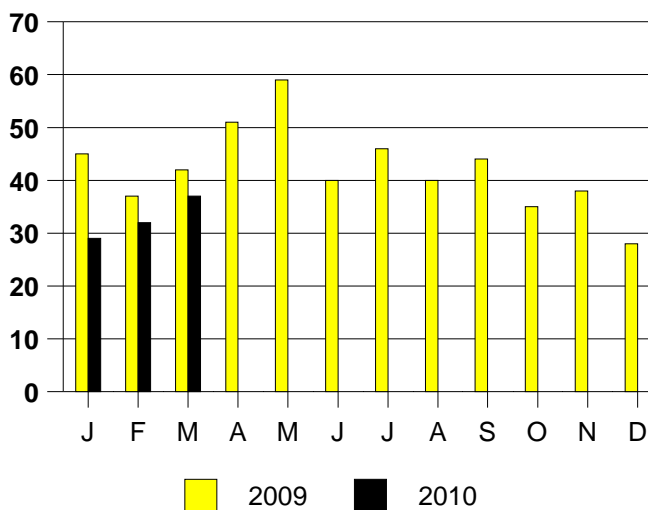
**SALE/LIST PRICE RATIO**

0K-100K	98.5%
101K-150K	96.8%
151K-200K	NONE
201K-300K	NONE
301K-500K	NONE
501K-750K	NONE
751K+	NONE

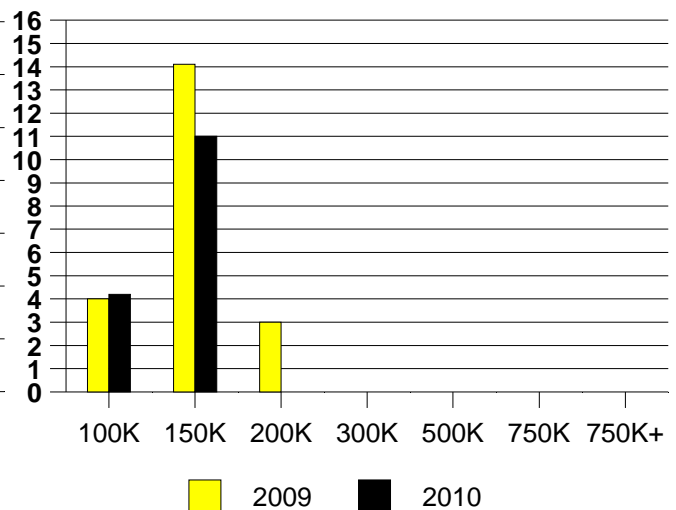
**AVERAGE OVERPRICING**  
Original List Price to Sale Price

2009	23.6%
2010	13.7%

**OAK CLIFF MONTHLY SALES**



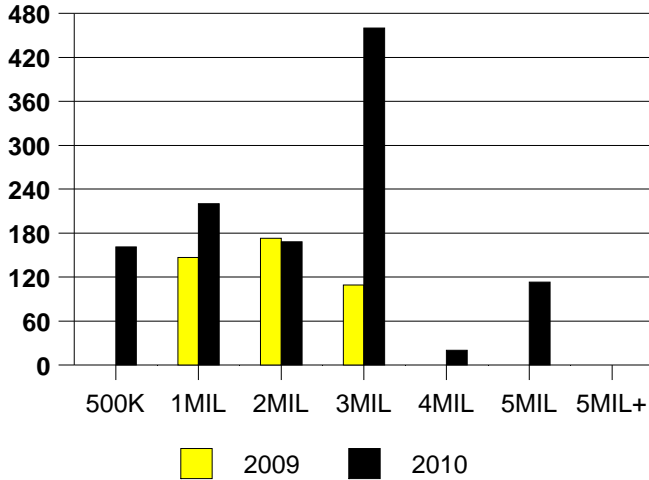
Inventory not shown where no sales  
**OAK CLIFF MONTHS OF INVENTORY**



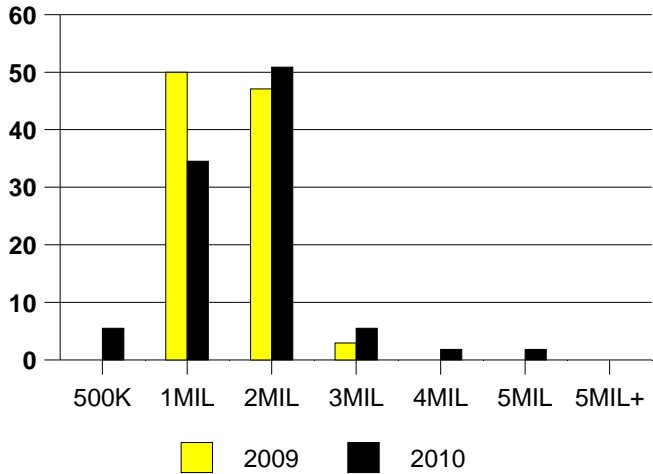
NTREIS Sold informaton as of 04/02/2010

	2009	2010
Total Sold Volume	\$ 36,649,664	\$ 70,634,600
Number of Sales	34	55
Median Sale Price	\$ 997,500	\$ 1,150,000

DAYS ON THE MARKET (UNIV PARK)



MKT SHARE BY PRICE RANGE(UP)



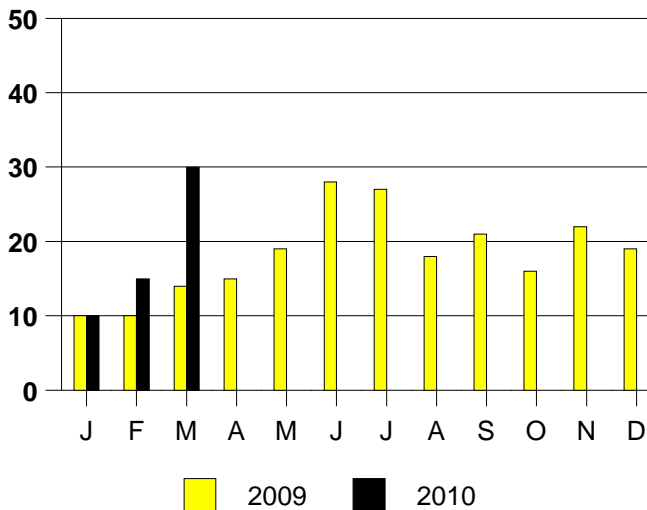
SALE/LIST PRICE RATIO

0K-500K	97.4%
501K-1MIL	96.0%
1MIL-2MIL	94.4%
2MIL-3MIL	95.4%
3MIL-4MIL	100.0%
4MIL-5MIL	100.0%
5MIL+	NONE

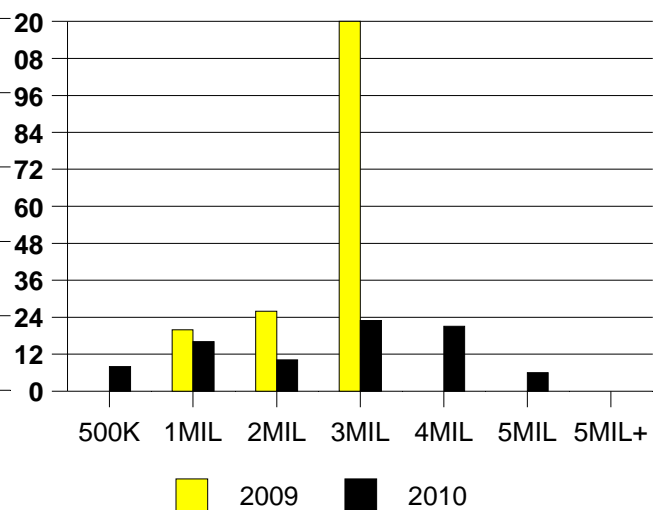
AVERAGE OVERPRICING

Orig List Price to Sale Price	
2009	15.0%
2010	13.2%

UNIVERSITY PARK MONTHLY SALES



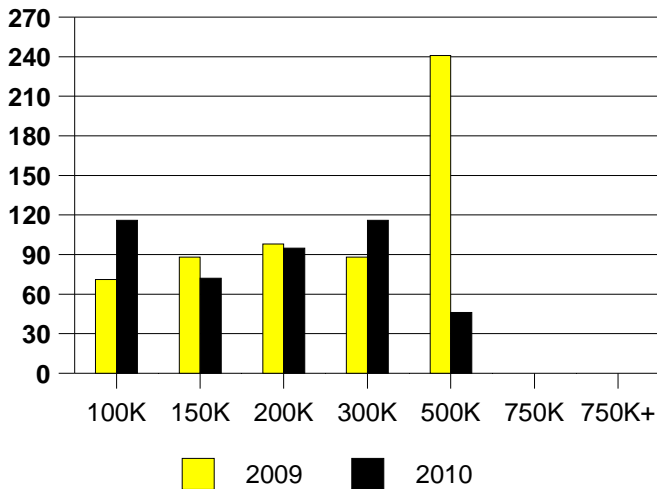
Inventory not shown where no sales  
UNIV PARK MONTHS OF INVENTORY



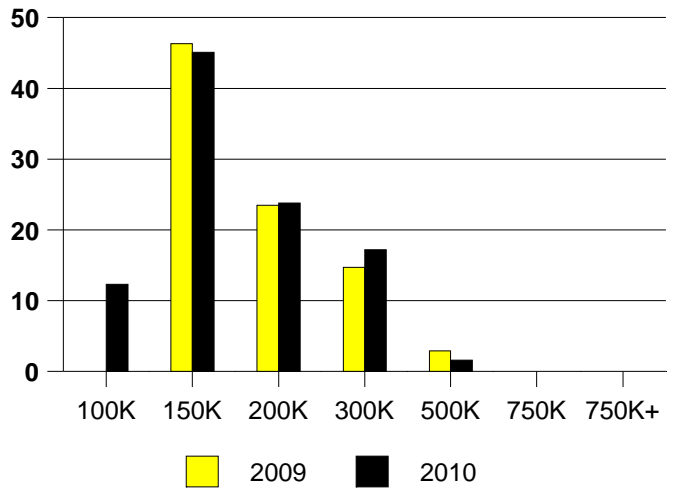
NTRUIS Sold information as of 04/02/2010

	<u>2009</u>	<u>2010</u>
Total Sold Volume	\$ 20,907,396	\$ 19,036,508
Number of Sales	136	122
Median Sale Price	\$ 145,000	\$ 146,975

**DAYS ON THE MARKET (WYLIE)**



**WYLIE MKT SHARE BY PRICE RANGE**



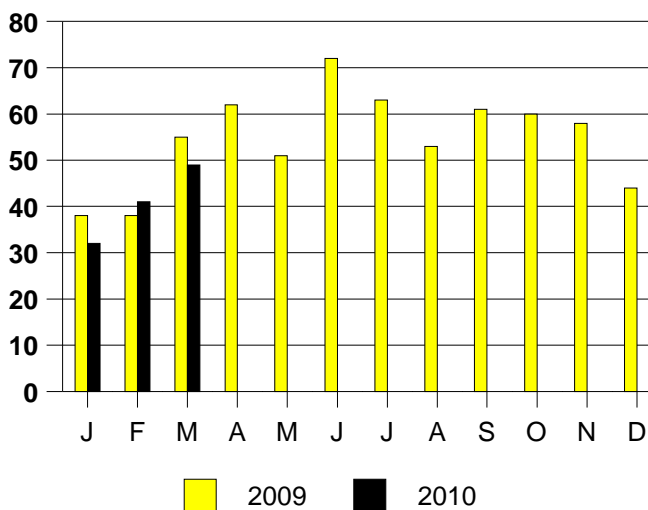
**SALE/LIST PRICE RATIO**

0K-100K	93.5%
101K-150K	97.3%
151K-200K	96.8%
201K-300K	95.6%
301K-500K	93.5%
501K-750K	NONE
751K+	NONE

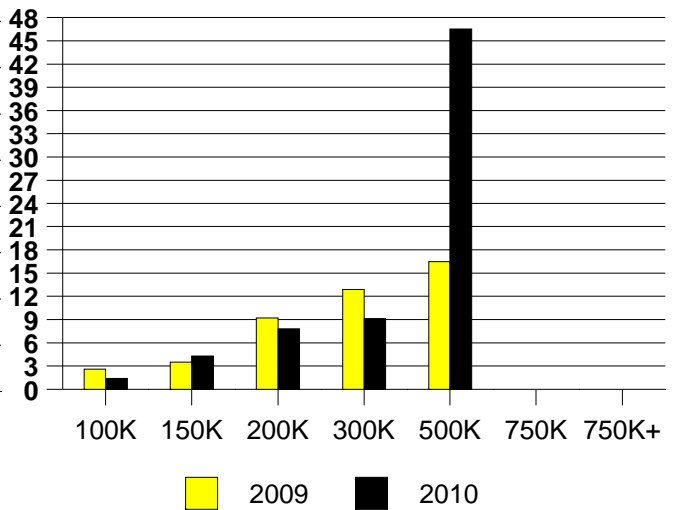
**AVERAGE OVERPRICING**  
Original List Price to Sale Price

2009	10.6%
2010	7.1%

**WYLIE MONTHLY SALES**



Inventory not shown where no sales  
**WYLIE MONTHS OF INVENTORY**



NTREIS Sold informaton as of 04/02/2010